



SR COZY CHALET



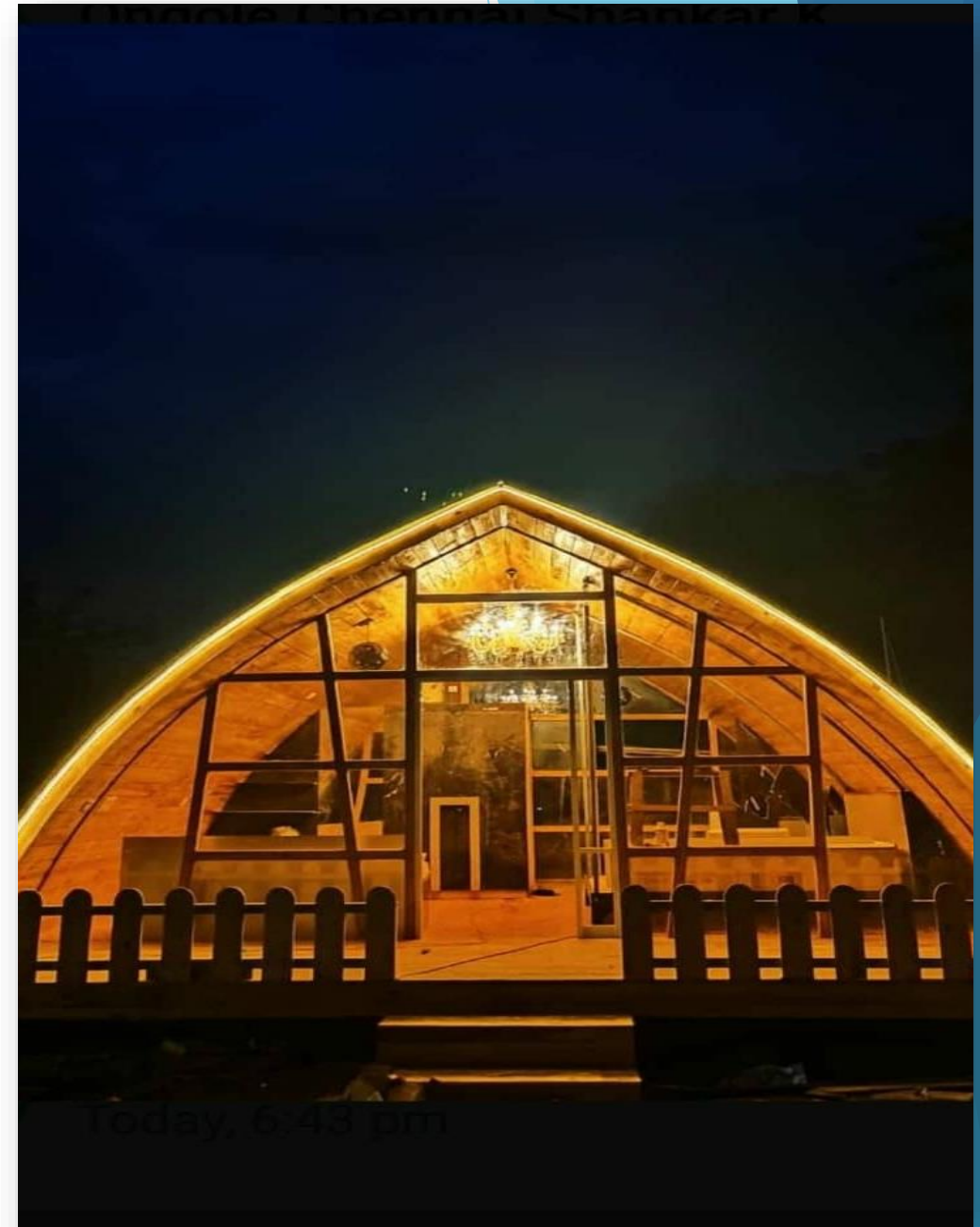
R. SENTHIL KUMAR
PROPRIETOR

WOODEN COTTAGES PETAL TYPE EXECUTIVE

- **Outer wall** - Galvanized sheet
- **Inner wall** - Wooden planks (Imported)
- **Wood treatments** - Termite, Primer, Poly care, Fire Protection.
- **Layer** - Double
- **Insulation** - XPS or Glass wool
- **Type** - Prefabricated
- **Cost** - Rs. 2350/Sqft
- **Mezzanine height** - 3 feet
- **Mezzanine flooring**- Shera Board
- **Flooring** - Ceramic Tiles or wood
- **Days to complete** - 45 Working days per cottage
- **Wind pressure withstand** - 100 Km/hr
- **Guarantee on interior paint and polish** - 12 months
- **Clients Scope** - Civil and allied works
- **Things not included** - Extra Accessories, Furniture,
Electrical and plumbing fittings.

GENERAL DESCRIPTION:

Size and room separations are customizable as per clients requirement

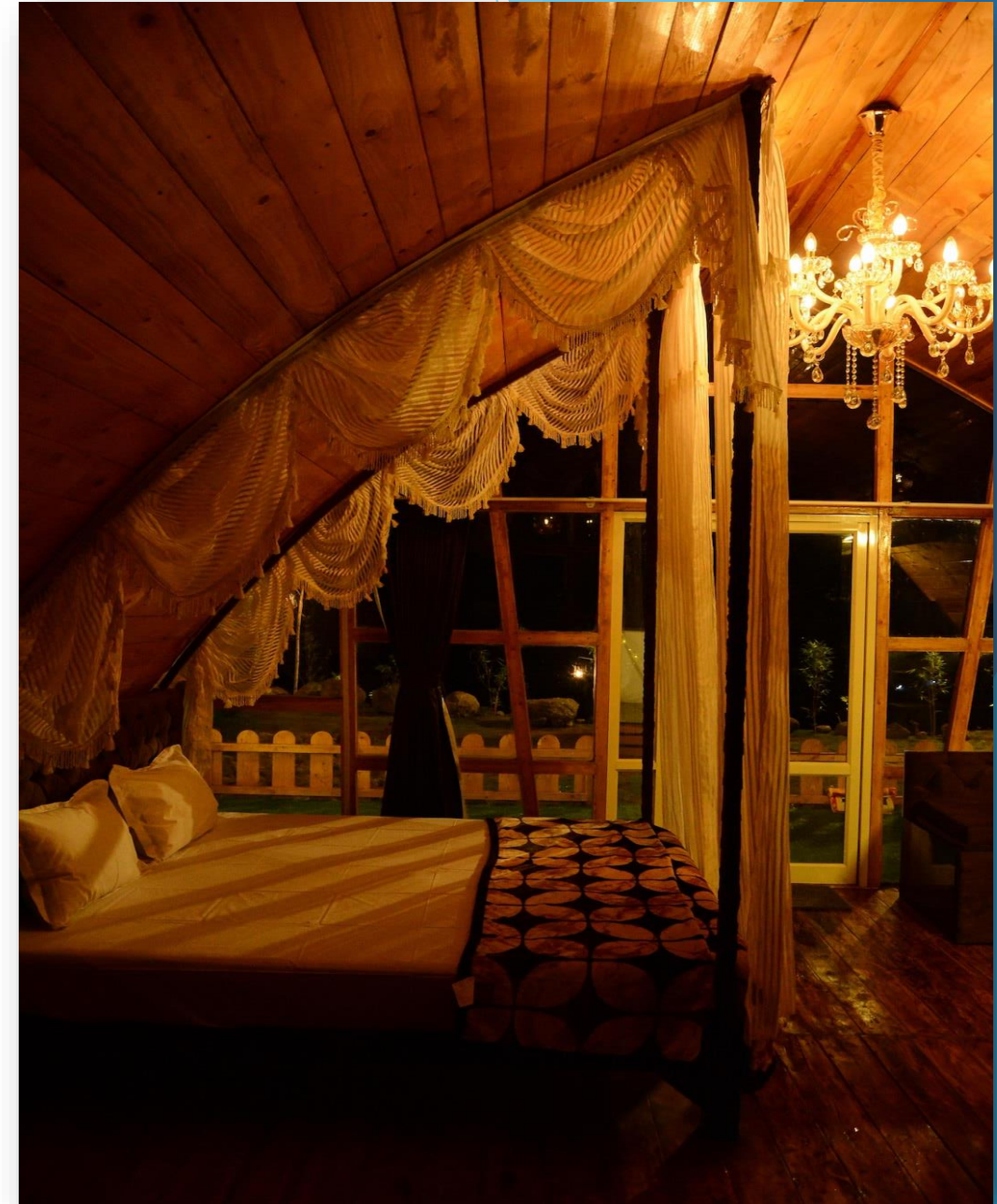


WOODEN COTTAGES PETAL TYPE BUDGET FRIENDLY

- **Outer wall** - **Galvanized sheet**
- **Inner wall** - **Straight deco board**
- **Layer** - **Double**
- **Type** - **Prefabricated**
- **Cost** - **Rs. 1850/Sqft**
- **Mezzanine height** - **3 feet**
- **Mezzanine flooring** - **Aerocone panel**
- **Flooring** - **Ceramic Tiles**
- **Days to complete** - **45 Working days per cottage**
- **Wind pressure withstand** - **80 Km/hr**
- **Guarantee on interior paint and polish** - **12 months**
- **Clients Scope** - **Civil and allied works**
- **Things not included** - **Extra Accessories, Furniture, Electrical and plumbing fittings.**

GENERAL DESCRIPTION:

Size and room separations are customizable as per clients requirement



WOODEN COTTAGES PETAL TYPE



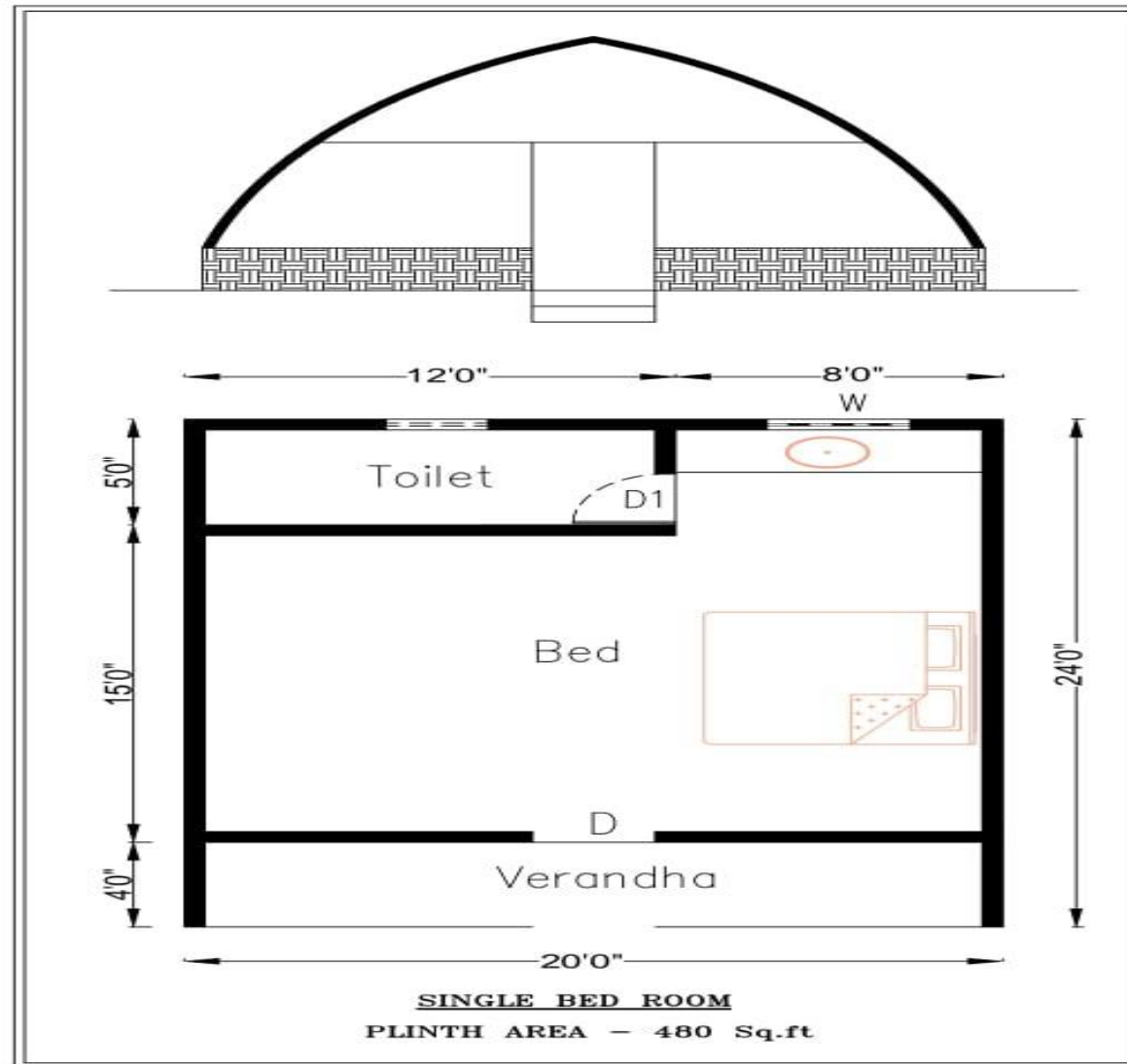
WOODEN COTTAGES PETAL TYPE INTERIOR



WOODEN COTTAGES PETAL TYPE INTERIOR



WOODEN COTTAGES PETAL TYPE FLOOR PLAN



WOODEN CLOUD HOUSE EXECUTIVE TYPE

- **Outer wall** - **Galvanized sheet**
- **Inner wall** - **Wooden planks (Imported)**
- **Wood treatments** - **Termite, Poly care, Primer, Fire Protection.**
- **Layer** - **Double**
- **Insulation** - **XPS or Glass wool**
- **Type** - **Prefabricated**
- **Cost** - **Rs. 3300/Sqft**
- **Mezzanine height** - **3 feet**
- **Mezzanine flooring-** **Shera Board**
- **Flooring** - **Ceramic Tiles or wood**
- **Days to complete** - **60 Working days per cottage**
- **Wind pressure withstand** - **100 Km/hr**
- **Guarantee on interior paint and polish** - **12 months**
- **Clients Scope** - **Civil and allied works**
- **Things not included-** **Extra Accessories, Furnitures,**
Electrical and plumbing fittings

GENERAL DESCRIPTION:

Size and room separations are customizable as per clients requirement



WOODEN CLOUD HOUSE BUDGET FRIENDLY TYPE

- **Outer wall** - **Galvanized sheet**
- **Inner wall** - **Straight deco board**
- **Layer** - **Double**
- **Type** - **Prefabricated**
- **Cost** - **Rs. 2550/Sqft**
- **Mezzanine height** - **3 feet**
- **Mezzanine flooring** - **Aerocone panel**
- **Flooring** - **Ceramic Tiles**
- **Days to complete** - **45 Working days per cottage**
- **Wind pressure withstand** - **80 Km/hr**
- **Guarantee on interior paint and polish** - **12 months**
- **Clients Scope** - **Civil and allied works**
- **Things not included** - **Extra Accessories, Furniture, Electrical and plumbing fittings.**

GENERAL DESCRIPTION:

Size and room separations are customizable as per clients requirement



WOODEN CLOUD HOUSE TYPE



WOODEN CLOUD HOUSE TYPE INTERIOR



WOODEN CLOUD HOUSE TYPE INTERIOR



WOODEN COTTAGE G+1 EXECUTIVE TYPE

- **Outer wall** - Canadian Wooden planks
- **Inner wall** - Canadian Wooden planks
- **Wood treatments** - Termite, Poly care, Primer, Fire Protection.
- **Layer** - Double
- **Insulation** - XPS or Glass wool
- **Type** - Prefabricated
- **Cost** - Rs. 2700/Sqft
- **Mezzanine height** - 8 feet
- **Mezzanine flooring-** Aerocone Panel (50mm Thickness)
- **Flooring** - Ceramic Tiles or wood
- **Days to complete** - 45 Working days per cottage
- **Wind pressure withstand** - 100 Km/hr
- **Guarantee on interior paint and polish** - 12 months
- **Clients Scope** - Civil and allied works
- **Things not included-** Extra Accessories, Furniture
Electrical and plumbing fittings

GENERAL DESCRIPTION:

Size and room separations are customizable as per clients requirement



WOODEN COTTAGE G+1 BUDGET FRIENDLY TYPE

- **Outer wall** - **Straight deco board**
- **Inner wall** - **straight deco board**
- **Layer** - **Double**
- **Type** - **Prefabricated**
- **Cost** - **Rs. 1800/Sqft**
- **Mezzanine height** - **8 feet**
- **Mezzanine flooring** - **Aerocone Panel (50mm Thickness)**
- **Flooring** - **Ceramic Tiles or wood**
- **Days to complete** - **45 Working days per cottage**
- **Wind pressure withstand** - **80 Km/hr**
- **Guarantee on interior paint and polish** - **12 months**
- **Clients Scope** - **Civil and allied works**
- **Things not included** - **Extra Accessories, Furniture, Electrical and plumbing fittings**

GENERAL DESCRIPTION:

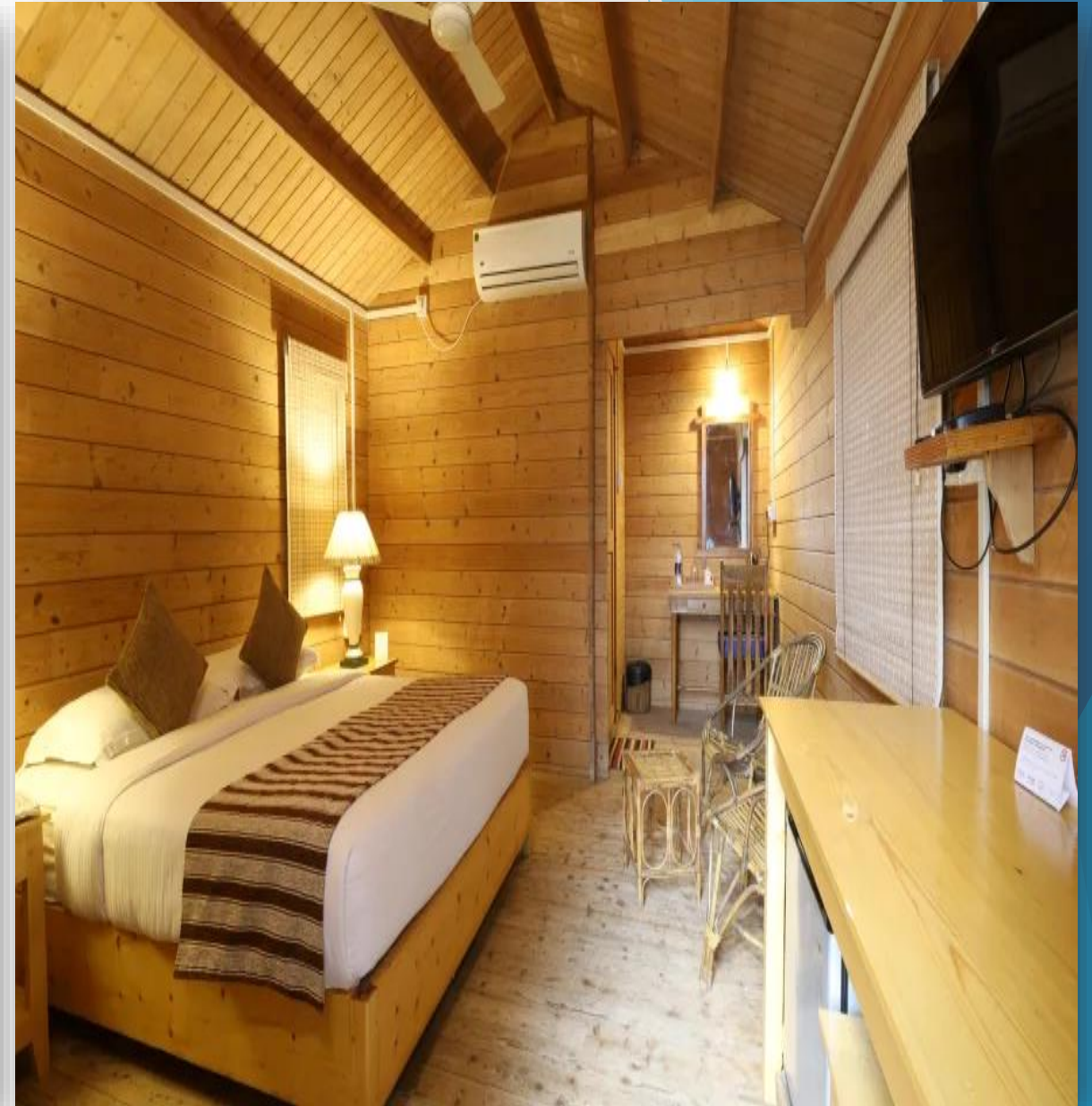
Size and room separations are customizable as per clients requirement



WOODEN COTTAGE G+1 TYPE



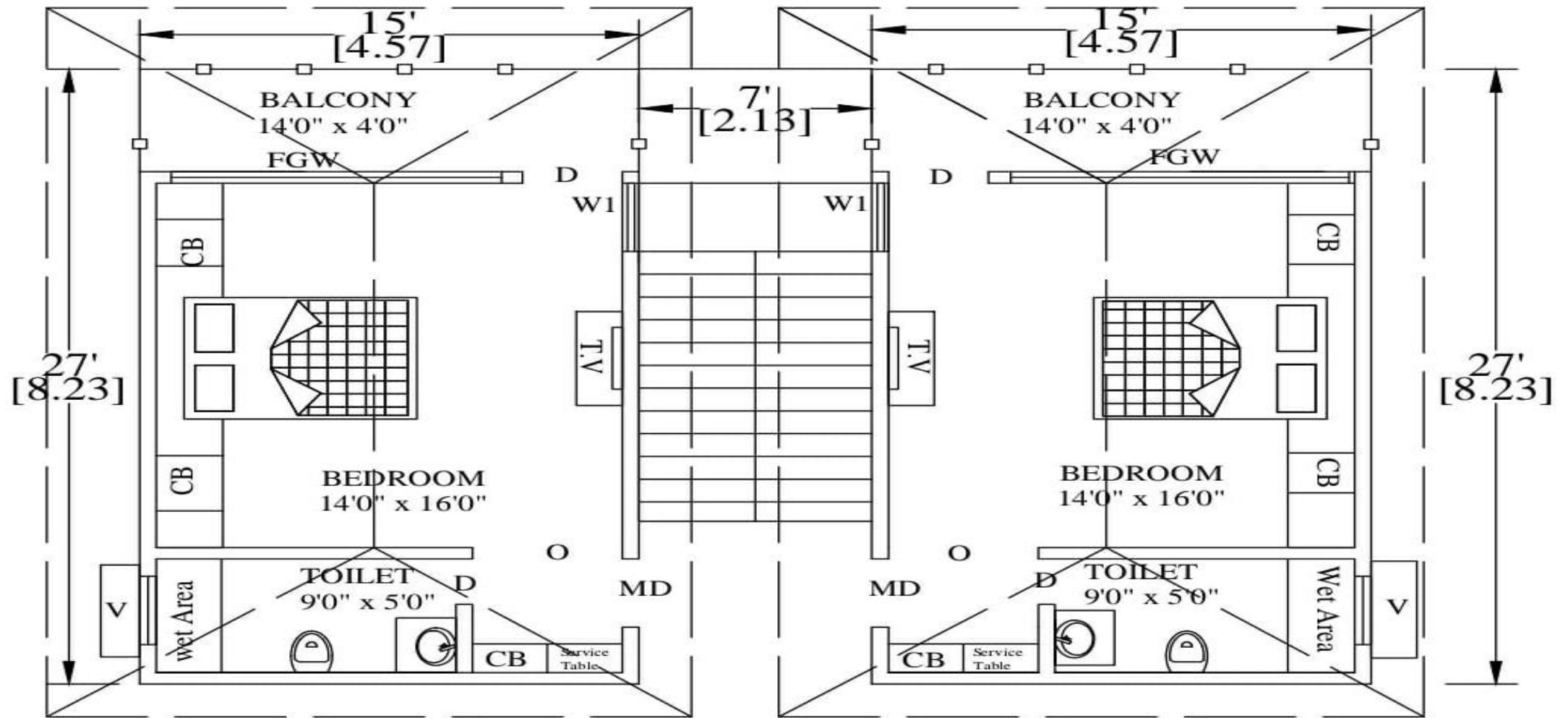
WOODEN COTTAGE G+1 TYPE



WOODEN COTTAGE G+1 TYPE INTERIOR



WOODEN COTTAGE G+1 TYPE FLOOR PLAN



TWIN VILLA 2 UNITS

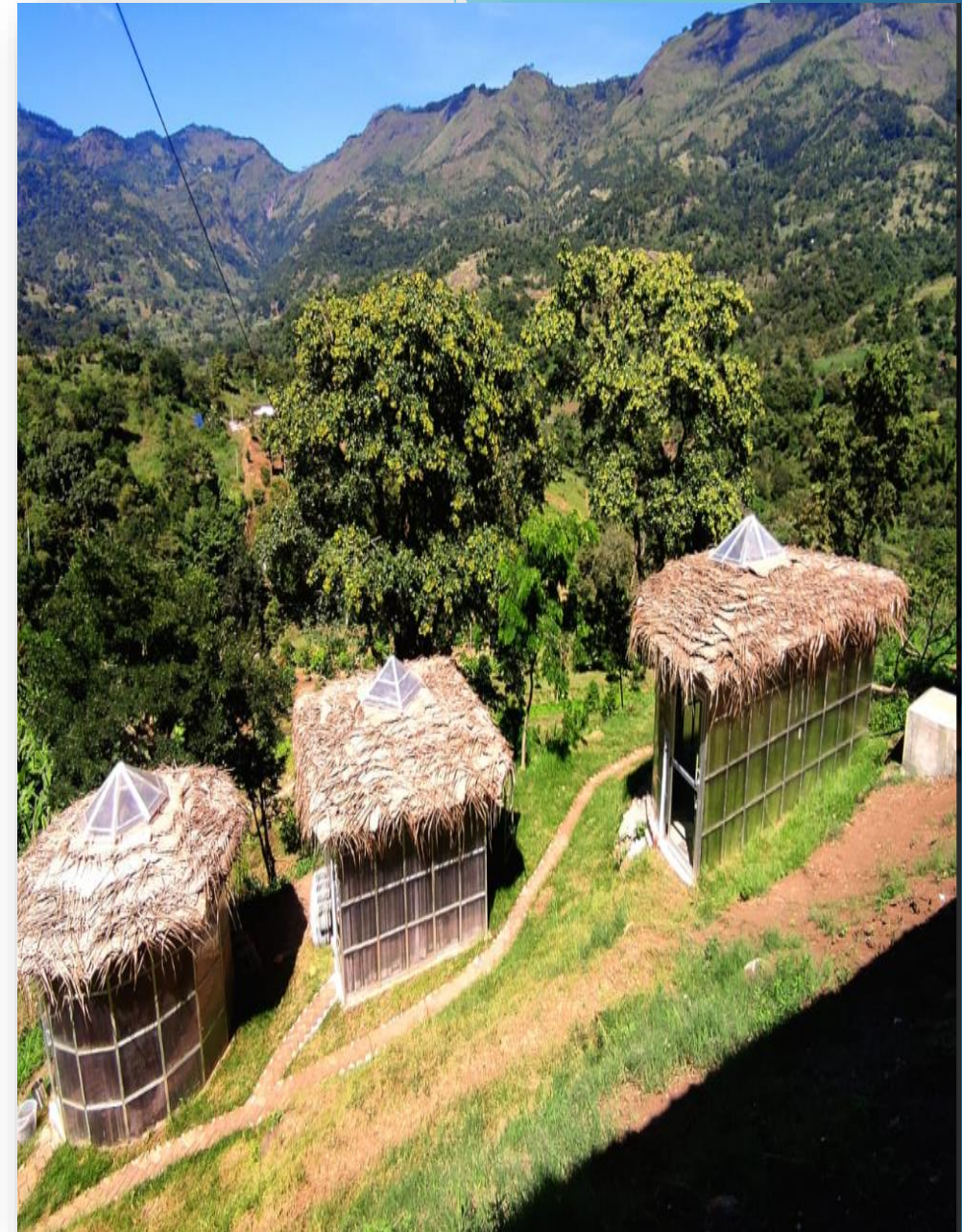
NORTH FACING VILLA

GLASS COTTAGE EXECUTIVE

- **Wall** - Polypropelene sheet (10mm thickness)
- **Layer** - Single
- **Type** - Prefabricated
- **Cost** - Rs. 2250/Sqft
- **Flooring** - Ceramic Tiles
- **Days to complete** - 45 Working days per cottage
- **Wind pressure withstand** - 60 Km/hr
- **Guarantee on interior paint and polish** - 12 months
- **Clients Scope** - Civil and allied works
- **Things not included** - Extra Accessories, Furniture,
Electrical and plumbing fittings

GENERAL DESCRIPTION:

Size and room separations are customizable as per clients requirement



POLYCARBONATE GLASS COTTAGE BUDGET FRIENDLY

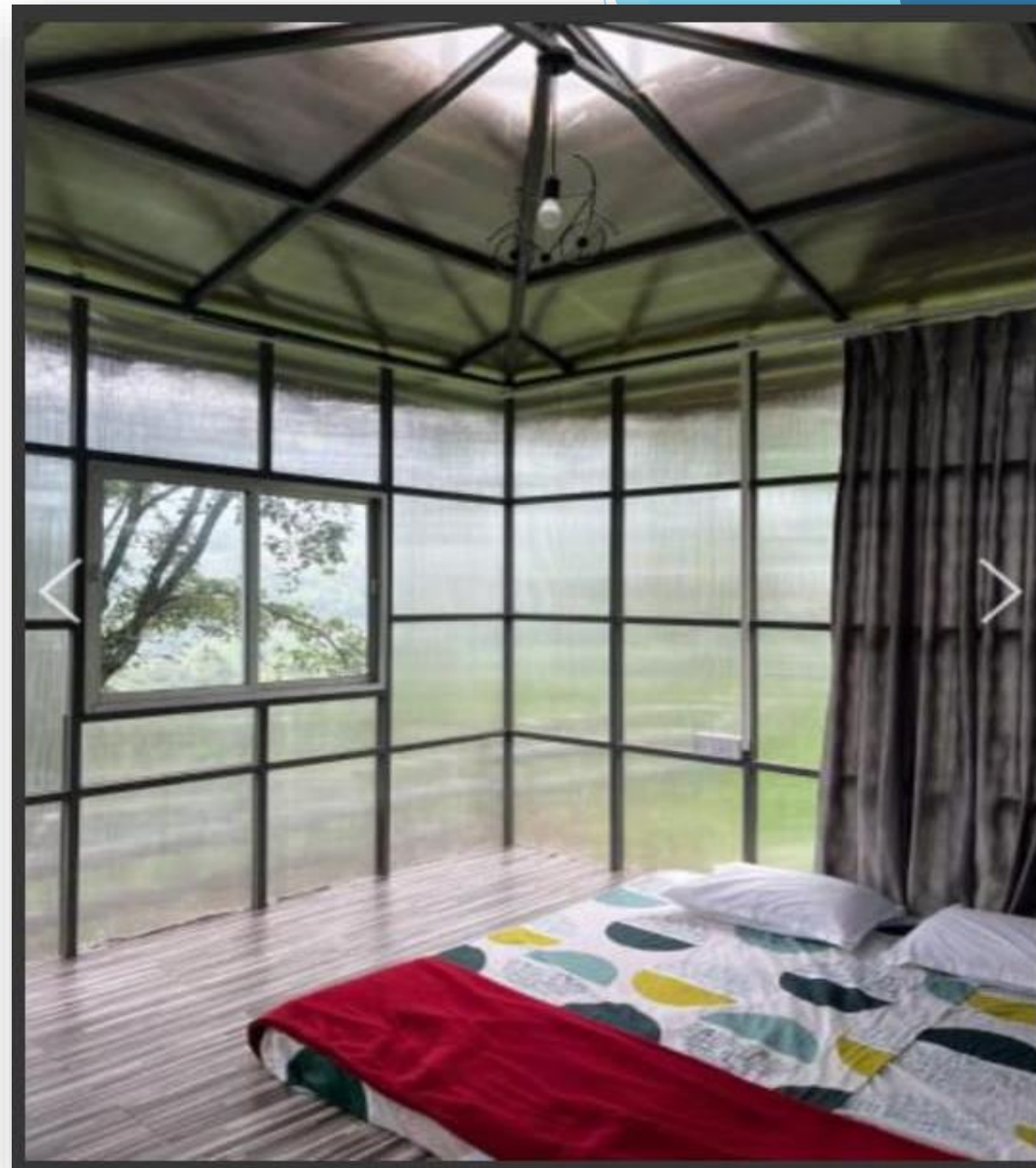
- **Wall** - **Polycarbonate**
- **Layer** - **Single**
- **Type** - **Prefabricated**
- **Cost** - **Rs. 1500/Sqft**
- **Flooring** - **Ceramic Tiles**
- **Days to complete** - **45 Working days per cottage**
- **Guarantee on interior paint and polish** - **12 months**
- **Clients Scope** - **Civil and allied works**
- **Things not included** - **Extra Accessories, furniture, Electrical and plumbing fittings**

GENERAL DESCRIPTION:

Size and room separations are customizable as per clients requirement



POLYCARBONATE GLASS COTTAGE



POLYCARBONATE GLASS COTTAGE



POLYCARBONATE GLASS COTTAGE INTERIOR



WOODEN COTTAGE FOR RESORT

- **Outer wall** - **Wooden planks (Imported) or Shera planks**
- **Inner wall** - **Wooden planks (Imported)**
- **Wood treatments** - **Termite, Poly care, Primer, Fire Protection.**
- **Layer** - **Double**
- **Insulation** - **XPS or Glass wool**
- **Type** - **Prefabricated**
- **Cost** - **Rs. 2150/Sqft**
- **Flooring** - **Ceramic Tiles or wood**
- **Days to complete** - **45 Working days per cottage**
- **Wind pressure withstand** - **100 Km/hr**
- **Guarantee on interior paint and polish** - **12 months**
- **Clients Scope** - **Civil and allied works**
- **Things not included** - **Extra Accessories, furniture, Electrical and plumbing fittings**

GENERAL DESCRIPTION:

Size and room separations are customizable as per clients requirement



WOODEN COTTAGE FOR RESORT

- **Outer wall** - **Straight Deco board**
- **Inner wall** - **Straight Deco board**
- **Layer** - **Double**
- **Type** - **Prefabricated**
- **Cost** - **Rs. 1650/Sqft**
- **Flooring** - **Ceramic Tiles**
- **Days to complete** - **45 Working days per cottage**
- **Wind pressure withstand** - **80 Km/hr**
- **Guarantee on interior paint and polish** - **12 months**
- **Clients Scope** - **Civil and allied works**
- **Things not included** - **Extra Accessories, furniture,**
Electrical and plumbing fittings

GENERAL DESCRIPTION:

Size and room separations are customizable as per clients requirement



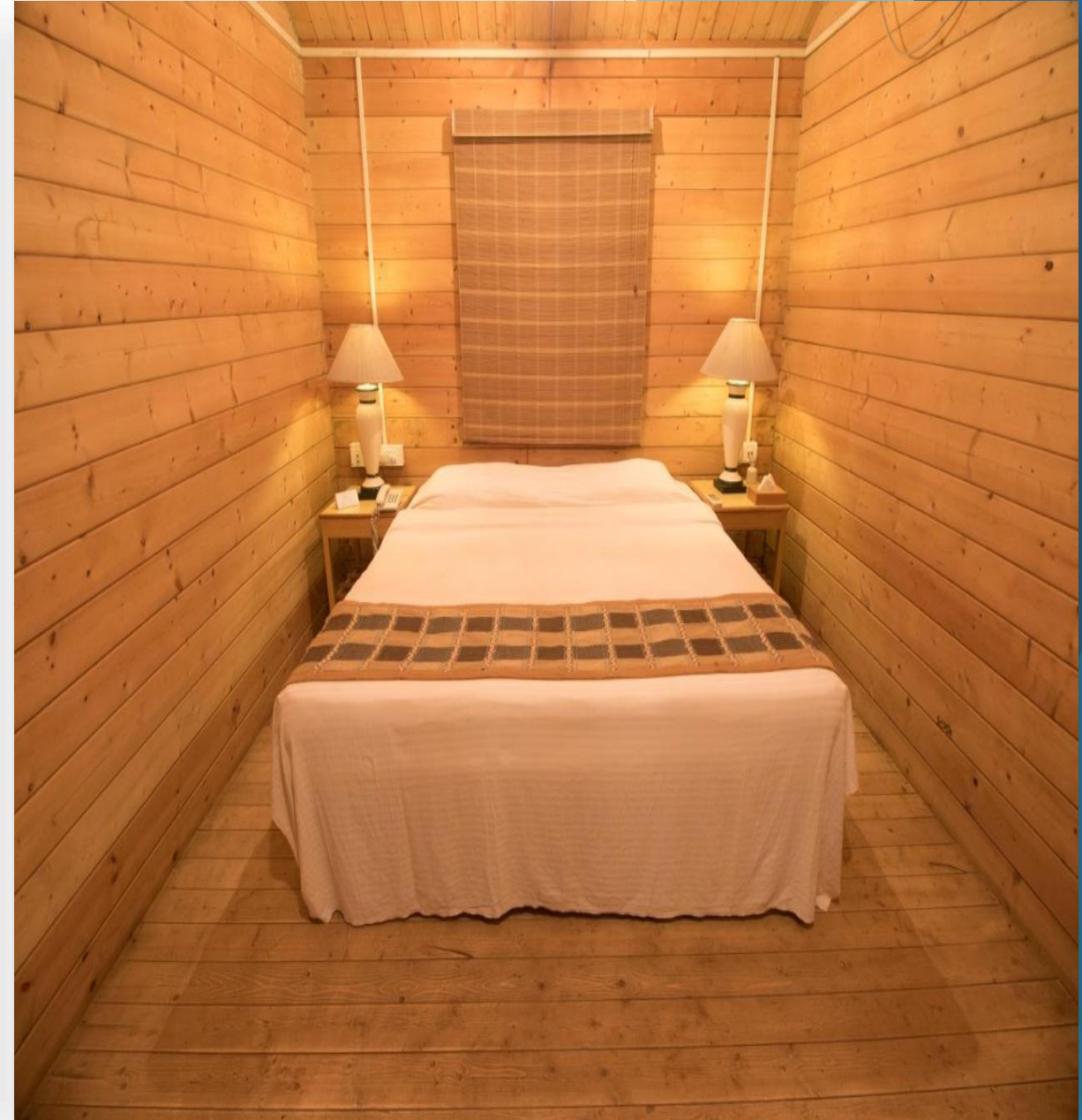
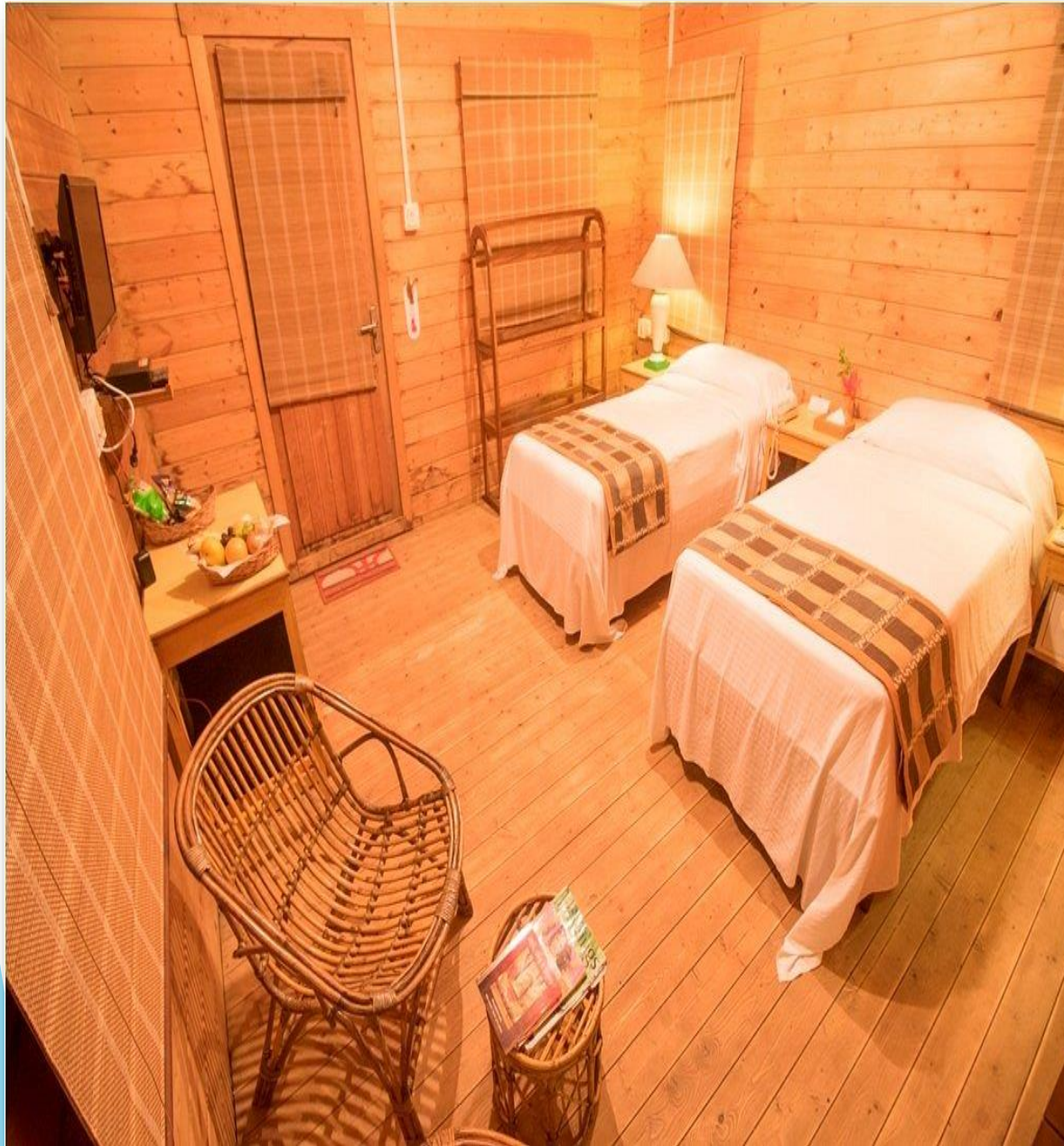
WOODEN COTTAGE FOR RESORT PURPOSE



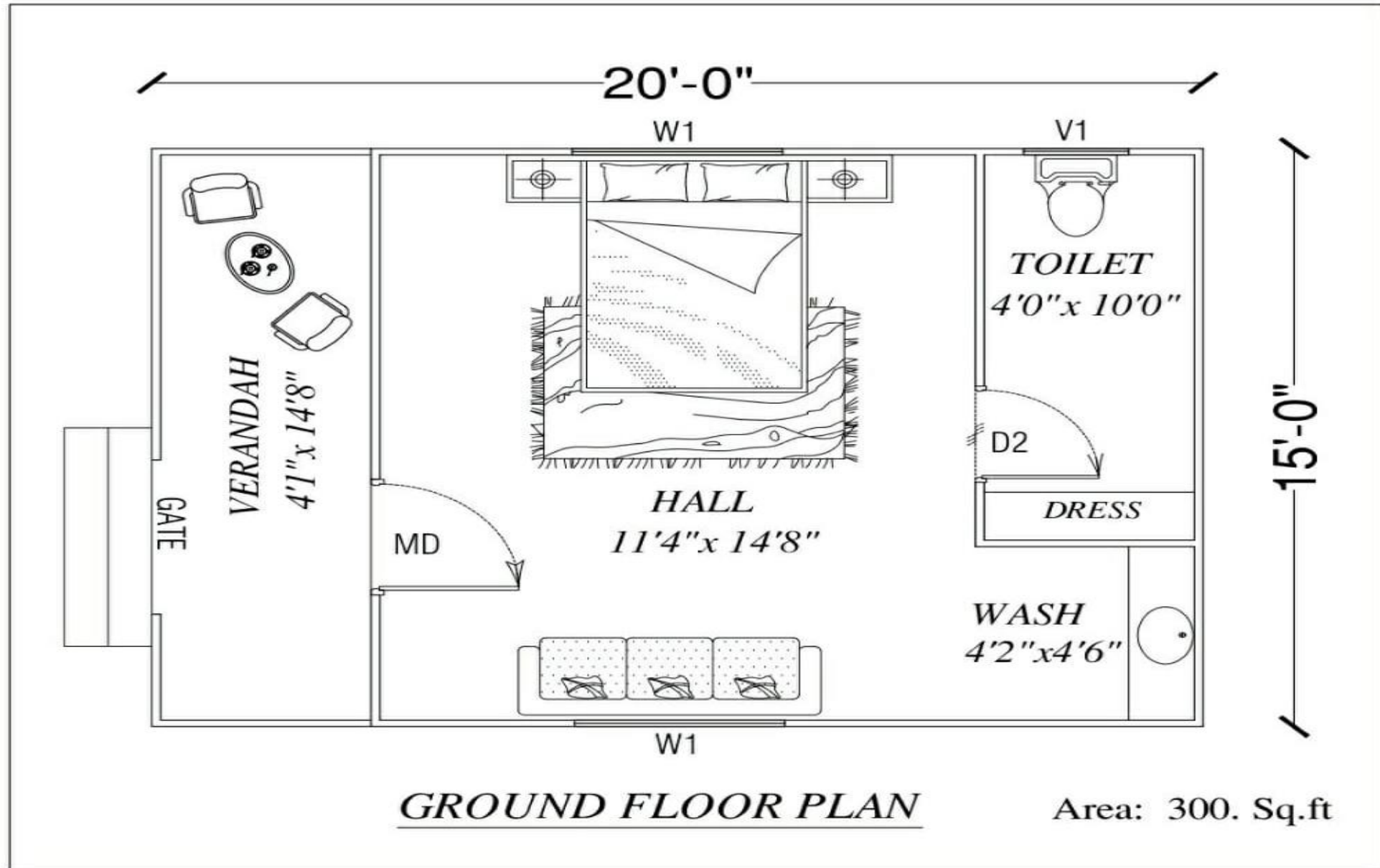
WOODEN COTTAGE FOR RESORT PURPOSE



WOODEN COTTAGE FOR RESORT PURPOSE INTERIOR



WOODEN COTTAGE FOR RESORT PURPOSE FLOOR PLAN

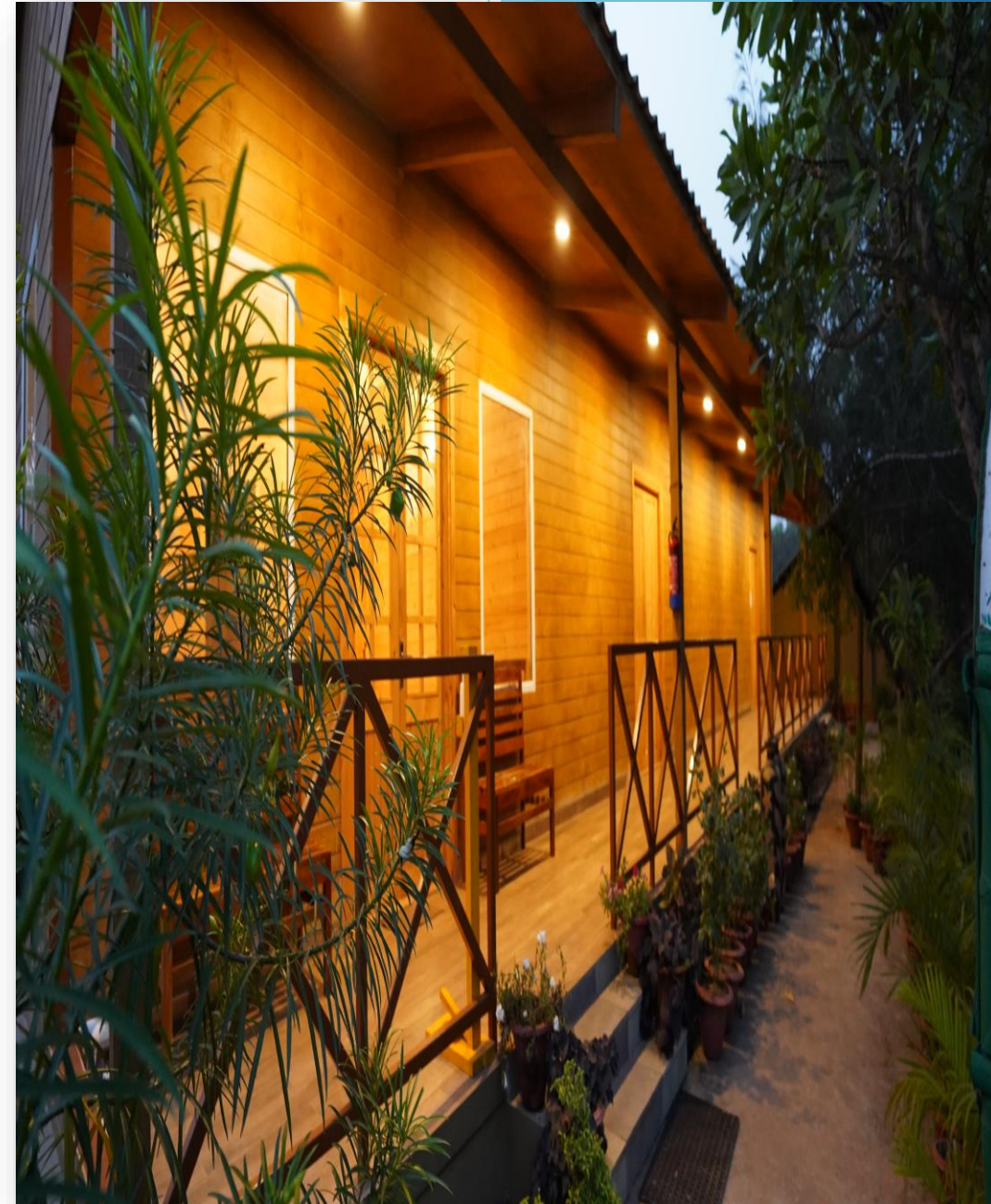


COMMERCIAL WOODEN CABINS

- **Outer wall** - **Wooden planks (Imported) or Shera planks**
- **Inner wall** - **Wooden planks (Imported)**
- **Wood treatments** - **Termite, Poly care, Primer, Fire Protection.**
- **Layer** - **Double**
- **Insulation** - **XPS or Glass wool**
- **Type** - **Prefabricated**
- **Cost** - **Rs. 2300/Sqft**
- **Flooring** - **Ceramic Tiles or wood**
- **Days to complete** - **45 Working days per cottage**
- **Wind pressure withstand** - **100 Km/hr**
- **Guarantee on interior paint and polish** - **12 months**
- **Clients Scope** - **Civil and allied works**
- **Things not included** - **Extra Accessories, furniture, Electrical and plumbing fittings**

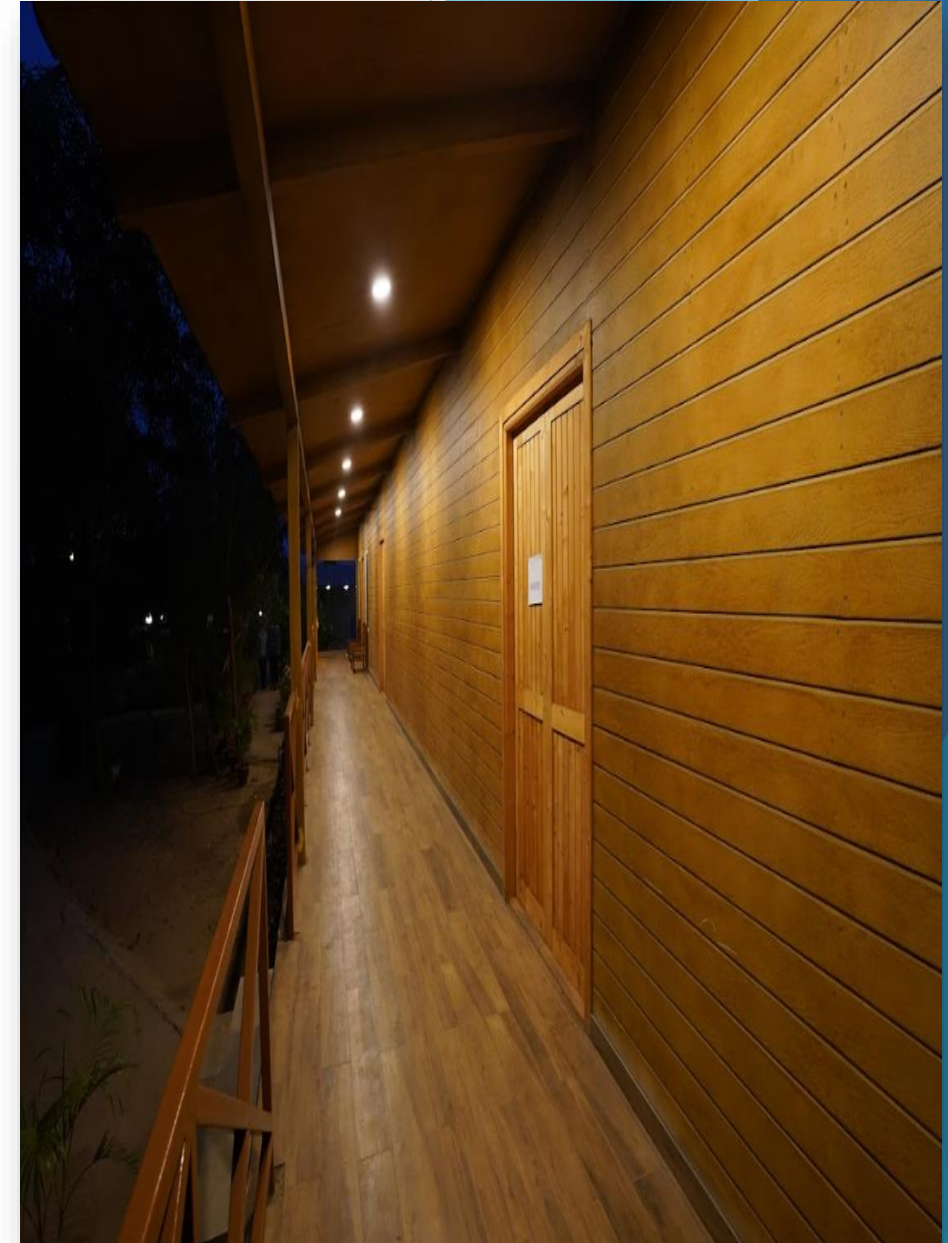
GENERAL DESCRIPTION:

Size and room separations are customizable as per clients requirement



COMMERCIAL WOODEN FINISH CABINS

- **Outer wall** - **Straight Deco Board**
- **Inner wall** - **Straight Deco Board**
- **Layer** - **Double**
- **Type** - **Prefabricated**
- **Cost** - **Rs. 1650/Sqft**
- **Flooring** - **Ceramic Tiles**
- **Days to complete** - **45 Working days per cottage**
- **Wind pressure withstand** - **80 Km/hr**
- **Guarantee on interior paint and polish** - **12 months**
- **Clients Scope** - **Civil and allied works**
- **Things not included** - **Extra Accessories, furniture,
Electrical and plumbing fittings**
- **GENERAL DESCRIPTION:**
- **Size and room separations are customizable as per
clients requirement**



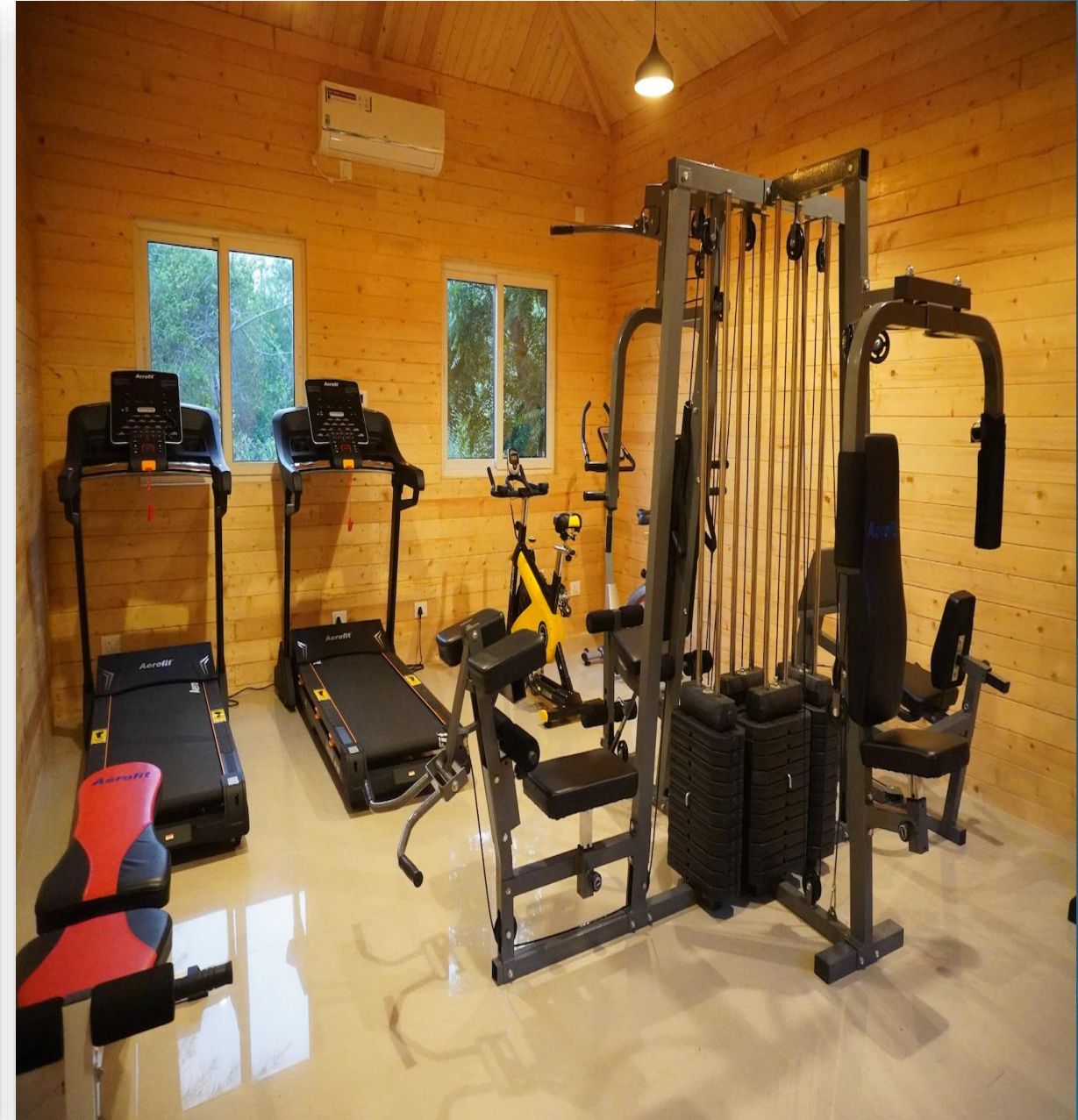
WOODEN CABINS FOR OFFICE SPACE



WOODEN CABINS FOR SPA



WOODEN CABINS FOR GYM



WOODEN CABINS FOR CONFERENCE HALL

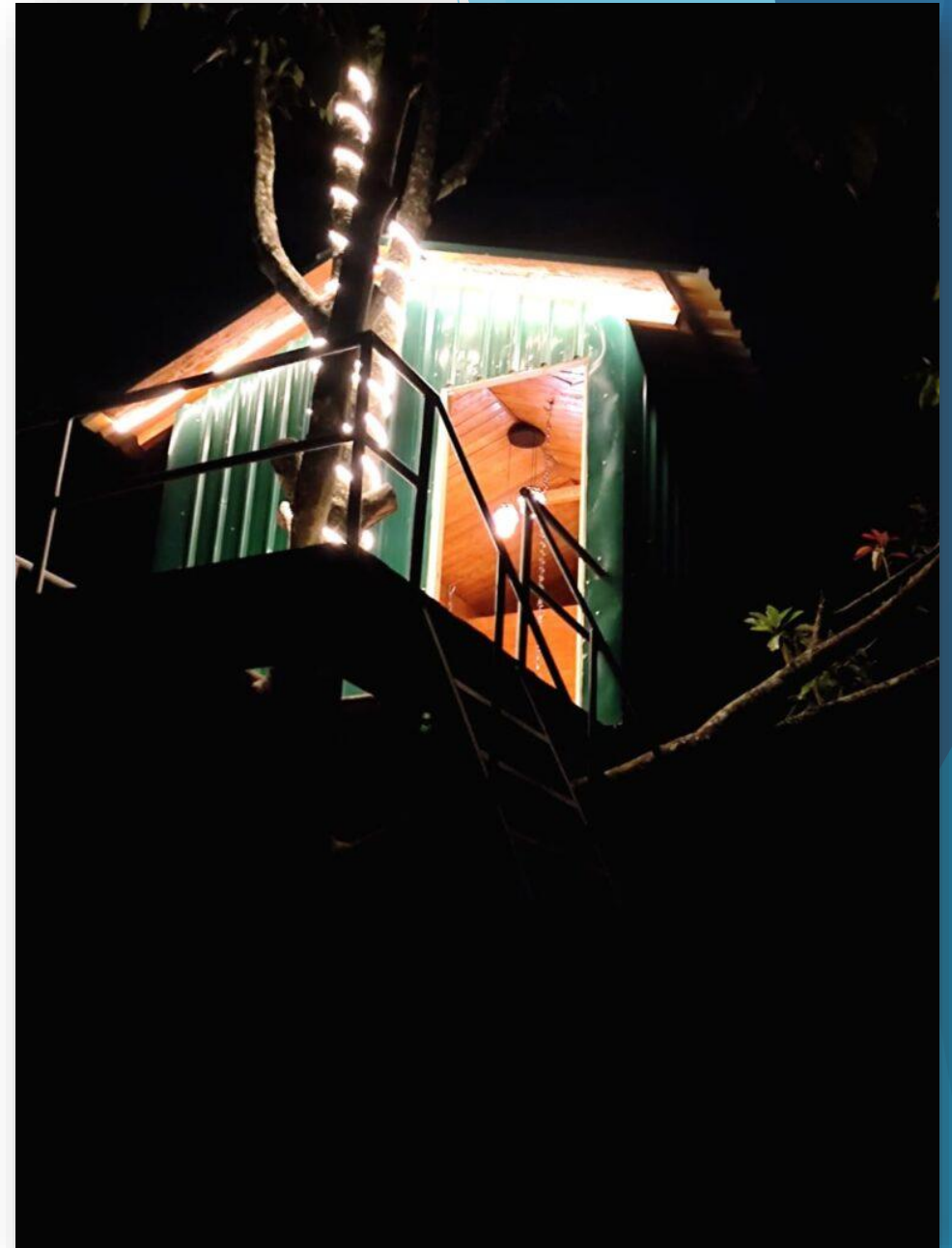


WOODEN TREE HOUSE EXECUTIVE

- **Outer wall** - **Galvanized sheet**
- **Inner wall** - **Wooden planks (Imported)**
- **Wood treatments** - **Termite, Poly care, Primer, Fire Protection.**
- **Layer** - **Double**
- **Insulation** - **XPS or Glass wool**
- **Type** - **Prefabricated**
- **Cost** - **Rs. 2500/Sqft**
- **Mezzanine height** - **10 feet**
- **Mezzanine flooring-** **Shera Board**
- **Flooring** - **Ceramic Tiles or wood**
- **Days to complete** - **60 Working days per cottage**
- **Wind pressure withstand** - **100 Km/hr**
- **Guarantee on interior paint and polish** - **12 months**
- **Clients Scope** - **Civil and allied works**
- **Things not included-** **Extra Accessories, furniture,**
Electrical and plumbing fittings

GENERAL DESCRIPTION:

Size and room separations are customizable as per clients requirement



WOODEN TREE HOUSE BUDGET FRIENDLY TYPE

- **Outer wall** - **Galvanized sheet**
- **Inner wall** - **Straight deco board**
- **Layer** - **Double**
- **Type** - **Prefabricated**
- **Cost** - **Rs. 1700/Sqft**
- **Mezzanine height** - **10 feet**
- **Mezzanine flooring- Shera Board**
- **Flooring** - **Ceramic Tiles**
- **Days to complete** - **60 Working days per cottage**
- **Wind pressure withstand** - **80 Km/hr**
- **Guarantee on interior paint and polish** - **12 months**
- **Clients Scope** - **Civil and allied works**
- **Things not included** - **Extra Accessories, furniture,
Electrical and plumbing fittings**

GENERAL DESCRIPTION:

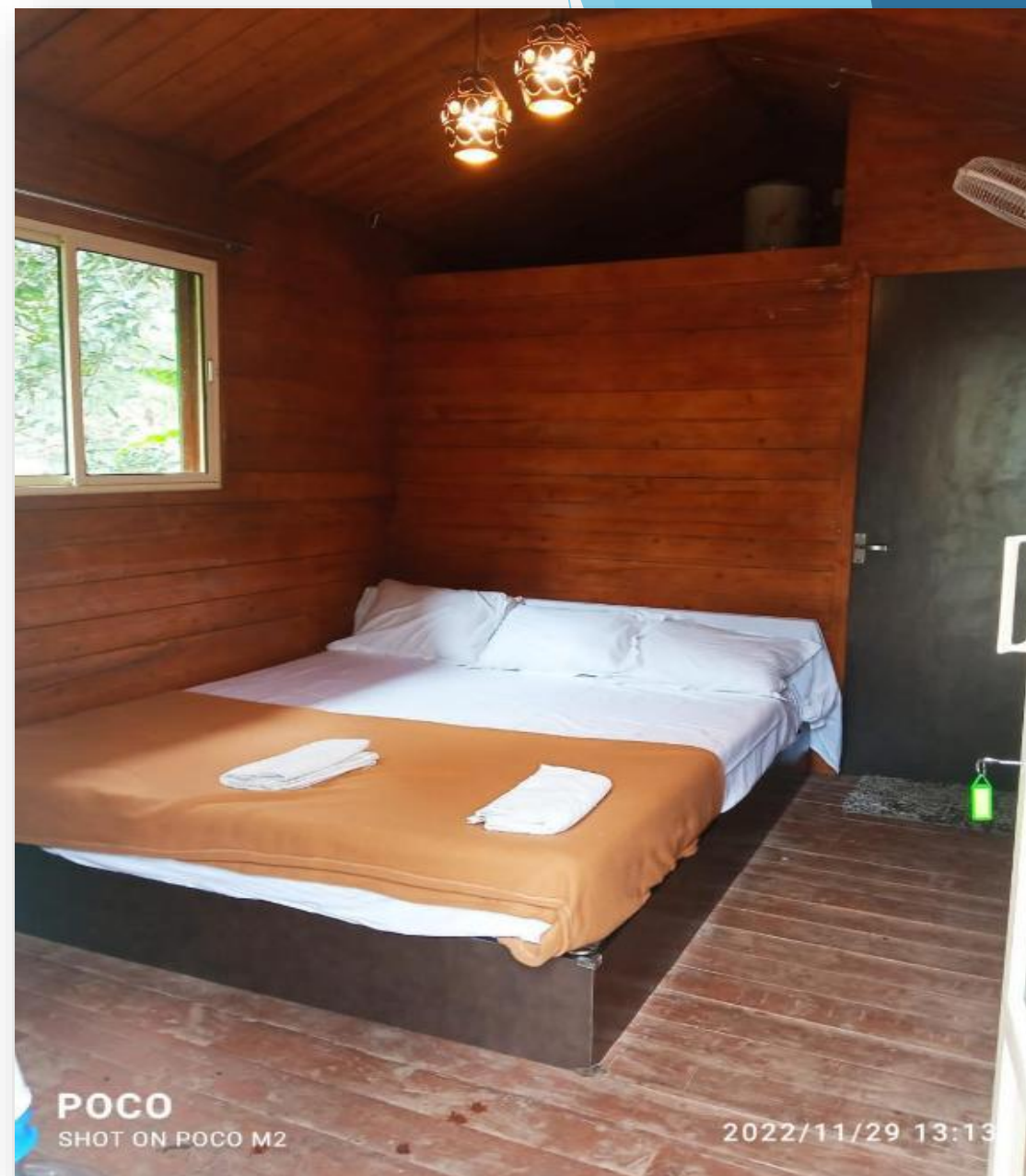
Size and room separations are customizable as per clients requirement



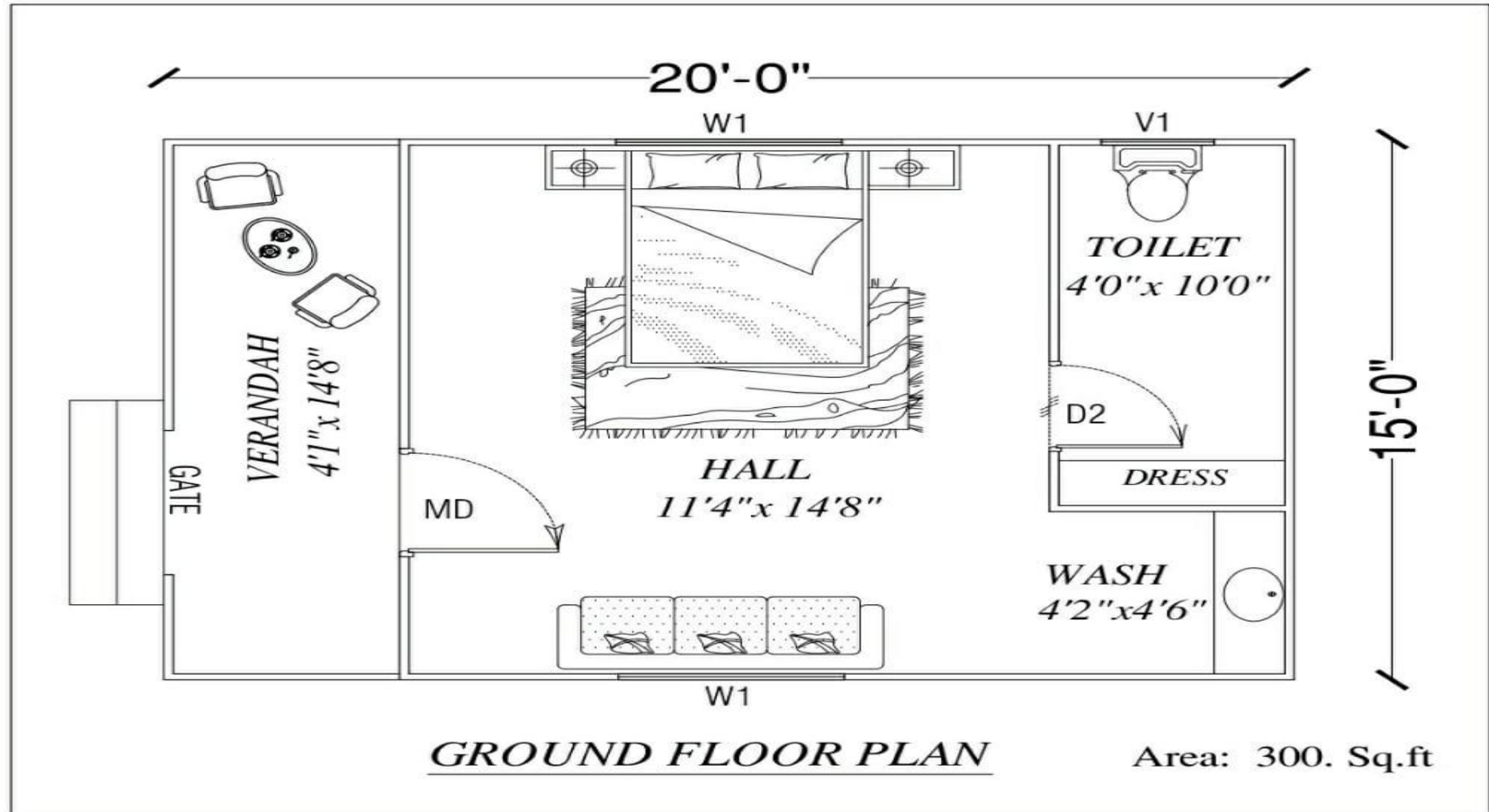
WOODEN TREE HOUSE



WOODEN TREE HOUSE INTERIOR



WOODEN TREE HOUSE FLOOR PLAN



WOODEN COTTAGE FOR VACATIONAL STAY EXECUTIVE TYPE

- **Outer wall** - **Wooden planks (Imported)**
- **Inner wall** - **Wooden planks (Imported)**
- **Wood treatments** - **Termite, Poly care, Primer, Fire Protection.**
- **Layer** - **Double**
- **Insulation** - **XPS or Glass wool**
- **Type** - **Prefabricated**
- **Cost** - **Rs. 2350/Sqft**
- **Mezzanine height** - **3 feet**
- **Mezzanine flooring** - **Shera Board**
- **Flooring** - **Ceramic Tiles or wood**
- **Days to complete** - **45 Working days per cottage**
- **Wind pressure withstand** - **100 Km/hr**
- **Guarantee on interior paint and polish** - **12 months**
- **Clients Scope** - **Civil and allied works**
- **Things not included** - **Extra Accessories, furniture, Electrical and plumbing fittings**

GENERAL DESCRIPTION:

Size and room separations are customizable as per clients requirement



WOODEN COTTAGE FOR VACATIONAL STAY BUDGET FRIENDLY TYPE

- **Outer wall** - **Straight deco board**
- **Inner wall** - **straight deco board**
- **Layer** - **Double**
- **Type** - **Prefabricated**
- **Cost** - **Rs. 1650/Sqft**
- **Mezzanine height** - **3 feet**
- **Mezzanine flooring** - **Shera Board**
- **Flooring** - **Ceramic Tiles**
- **Days to complete** - **45 Working days per cottage**
- **Wind pressure withstand** - **80 Km/hr**
- **Guarantee on interior paint and polish** - **12 months**
- **Clients Scope** - **Civil and allied works**
- **Things not included** - **Extra Accessories, furniture,
Electrical and plumbing fittings**

GENERAL DESCRIPTION:

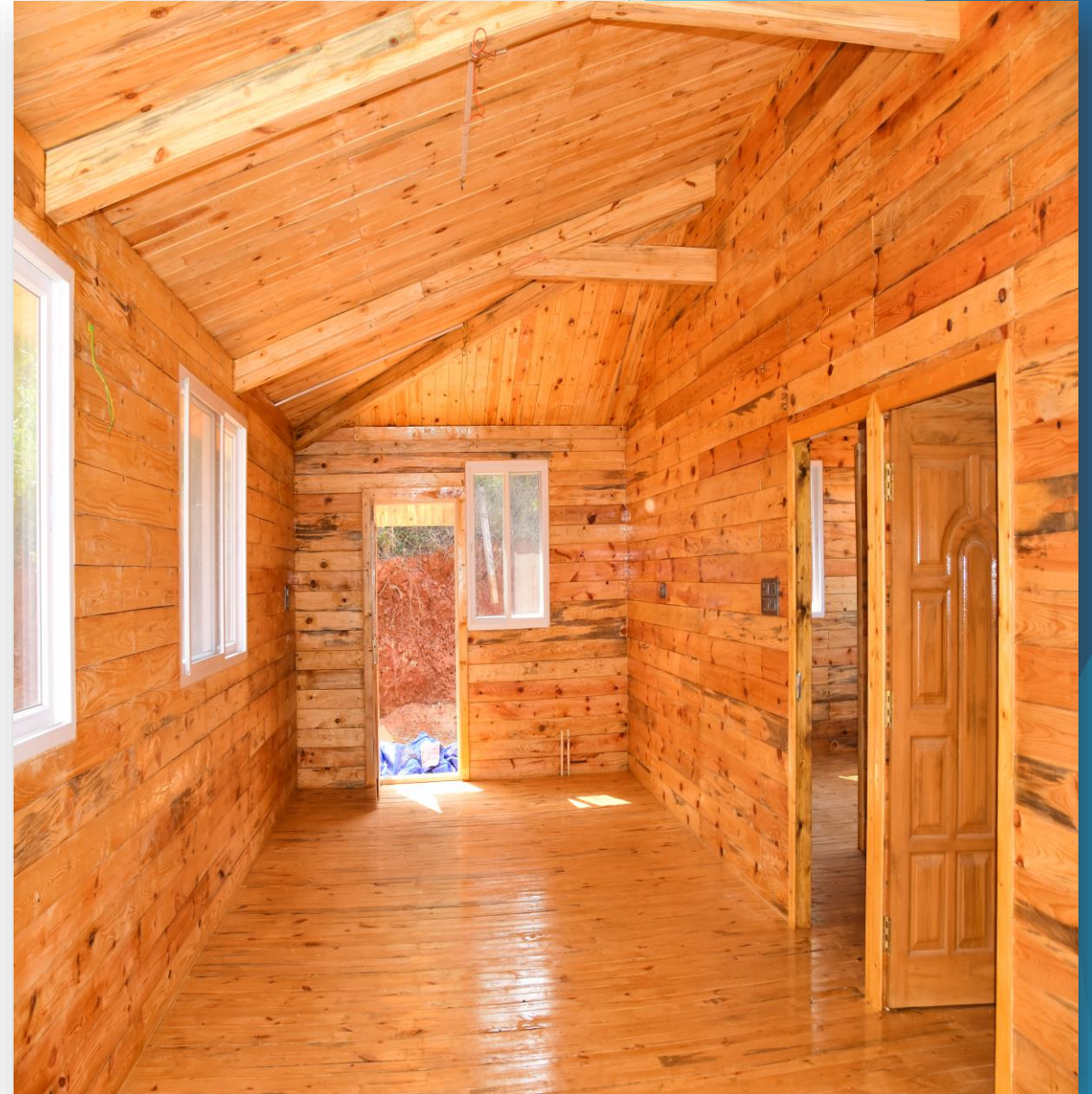
Size and room separations are customizable as per clients requirement



WOODEN COTTAGE FOR VACATIONAL STAY



WOODEN COTTAGE FOR VACATIONAL STAY



WOODEN COTTAGE FOR VACATIONAL STAY EXECUTIVE TYPE

- **Outer wall** - **Galvanized sheet**
- **Inner wall** - **Wooden planks (Imported)**
- **Wood treatments** - **Termite, Poly care, Primer, Fire Protection.**
- **Layer** - **Double**
- **Insulation** - **XPS or Glass wool**
- **Type** - **Prefabricated**
- **Cost** - **Rs. 2350/Sqft**
- **Mezzanine height** - **3 feet**
- **Mezzanine flooring-** **Shera Board**
- **Flooring** - **Ceramic Tiles or wood**
- **Days to complete** - **45 Working days per cottage**
- **Wind pressure withstand** - **100 Km/hr**
- **Guarantee on interior paint and polish** - **12 months**
- **Clients Scope** - **Civil and allied works**
- **Things not included** - **Extra Accessories, furniture**
Electrical and plumbing fittings

GENERAL DESCRIPTION:

Size and room separations are customizable as per clients requirement



WOODEN COTTAGE FOR VACATIONAL STAY BUDGET FRIENDLY TYPE

- **Outer wall** - **Galvanized sheet**
- **Inner wall** - **straight deco board**
- **Layer** - **Double**
- **Type** - **Prefabricated**
- **Cost** - **Rs. 1750/Sqft**
- **Mezzanine height** - **3 feet**
- **Mezzanine flooring** - **Shera Board**
- **Flooring** - **Ceramic Tiles**
- **Days to complete** - **45 Working days per cottage**
- **Wind pressure withstand** - **80 Km/hr**
- **Guarantee on interior paint and polish** - **12 months**
- **Clients Scope** - **Civil and allied works**
- **Things not included** - **Extra Accessories, furniture**
Electrical and plumbing fittings

GENERAL DESCRIPTION:

Size and room separations are customizable as per clients requirement



WOODEN COTTAGE IN TERRACE EXECUTIVE TYPE

- **Outer wall** - **Wooden planks (Imported)**
- **Inner wall** - **Wooden planks (Imported)**
- **Wood treatments** - **Termite, Poly care, Primer, Fire Protection.**
- **Layer** - **Double**
- **Insulation** - **XPS or Glass wool**
- **Type** - **Prefabricated**
- **Cost** - **Rs. 2400/Sqft**
- **Mezzanine height** - **3 feet**
- **Mezzanine flooring-** **Shera Board**
- **Flooring** - **Ceramic Tiles or wood**
- **Days to complete** - **45 Working days per cottage**
- **Wind pressure withstand** - **100 Km/hr**
- **Guarantee on interior paint and polish** - **12 months**
- **Clients Scope** - **Civil and allied works**
- **Things not included-** **Extra Accessories, furniture**
Electrical and plumbing fittings

GENERAL DESCRIPTION:

Size and room separations are customizable as per clients requirement

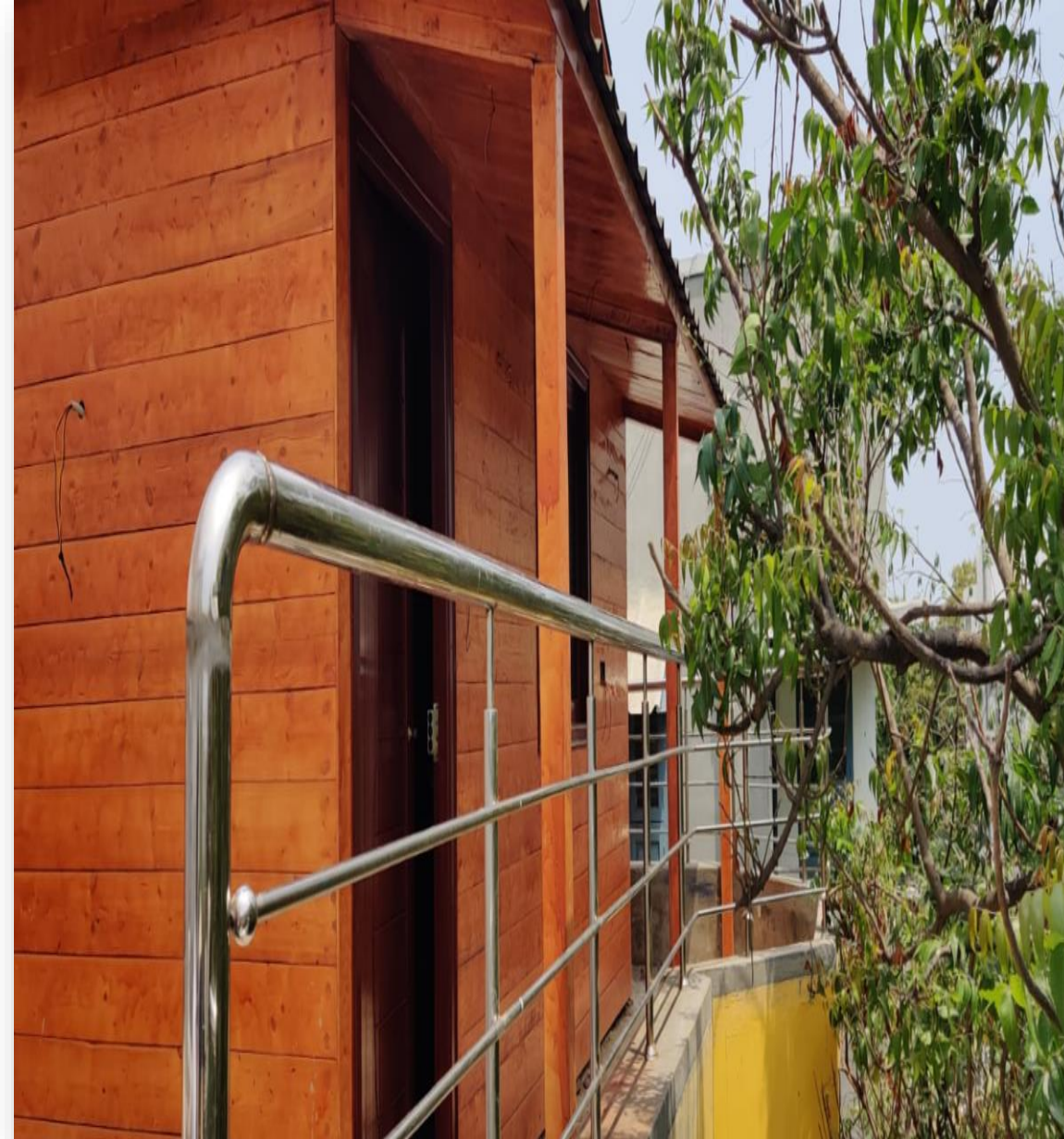


WOODEN COTTAGE IN TERRACE BUDGET FRIENDLY TYPE

- **Outer wall** - **Straight deco board**
- **Inner wall** - **straight deco board**
- **Layer** - **Double**
- **Type** - **Prefabricated**
- **Cost** - **Rs. 1600/Sqft**
- **Mezzanine height** - **3 feet**
- **Mezzanine flooring** - **Shera Board**
- **Flooring** - **Ceramic Tiles**
- **Days to complete** - **45 Working days per cottage**
- **Wind pressure withstand** - **80 Km/hr**
- **Guarantee on interior paint and polish** - **12 months**
- **Clients Scope** - **Civil and allied works**
- **Things not included** - **Extra Accessories, furniture, Electrical and plumbing fittings**

GENERAL DESCRIPTION:

Size and room separations are customizable as per clients requirement



STEEL SPECIFICATIONS SQUARE TUBE

IS 4923 : 1997 HOLLOW STEEL SECTIONS FOR STRUCTURAL USE — SPECIFICATION

Table 1 Dimension and Properties of Square Hollow Sections

Designation	Depth or Width D	Thickness	Weight	Area of Section	Moment of Inertia	Radius of Gyration	Elastic Modulus	Plastic Modulus
mm	mm	mm	kg/m	cm ²	cm ⁴	cm	cm ³	cm ³
(1)	(2)	(3)	(4)	(5)	(6)	(7)	(8)	(9)
180 × 180 × 4	180	4	21.9	27.9	1 434	7.17	159	184
180 × 180 × 5	180	5	27.2	34.6	1 755	7.12	195	226
180 × 180 × 6	180	6	32.05	40.83	2 036	7.06	226	280
180 × 180 × 8	180	8	42.5	54.1	2 633	6.98	293	346



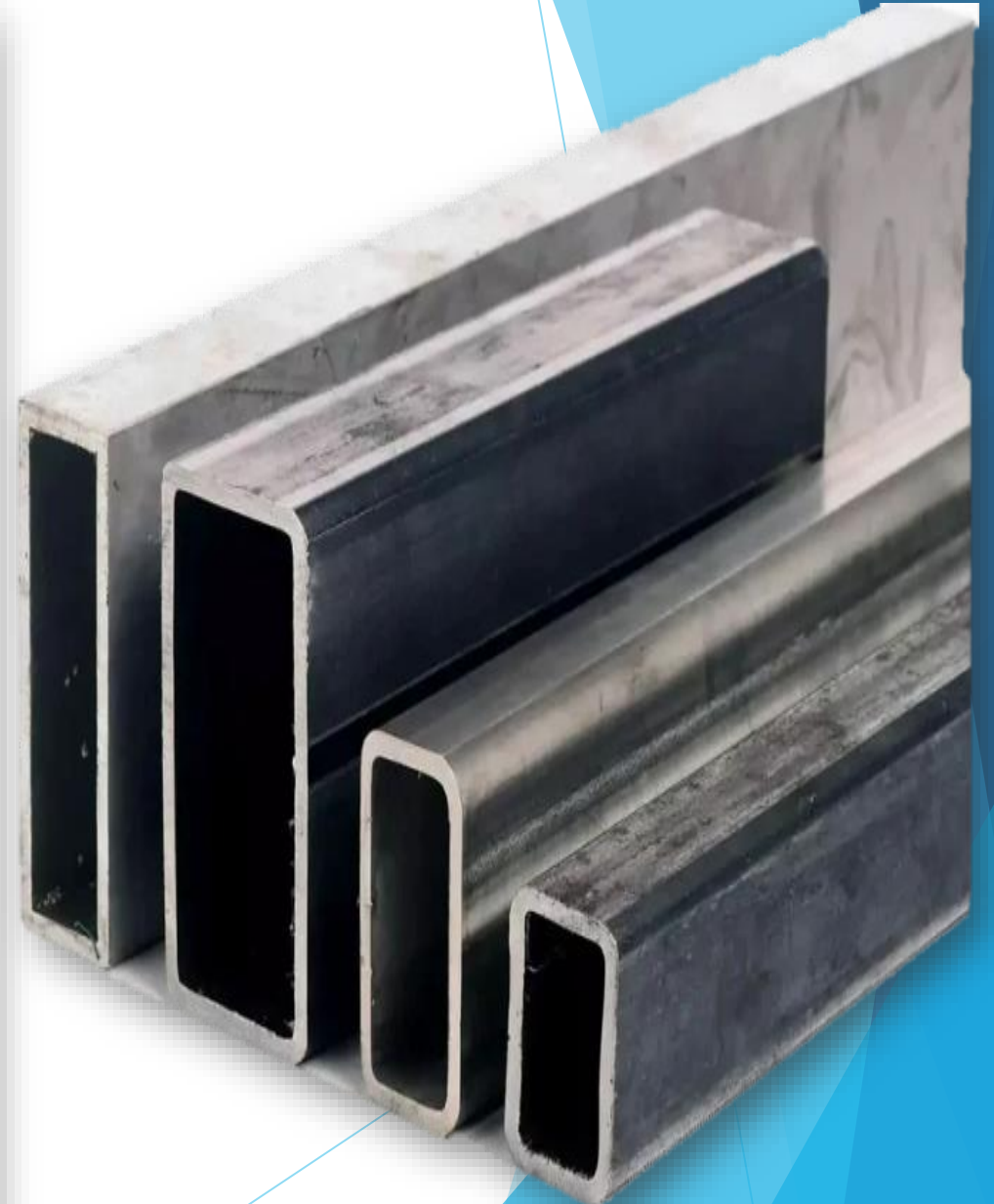
STEEL SPECIFICATIONS RECTANGULAR TUBE

Rectangular Hollow Sections YST 310 Grade

IS : 4923

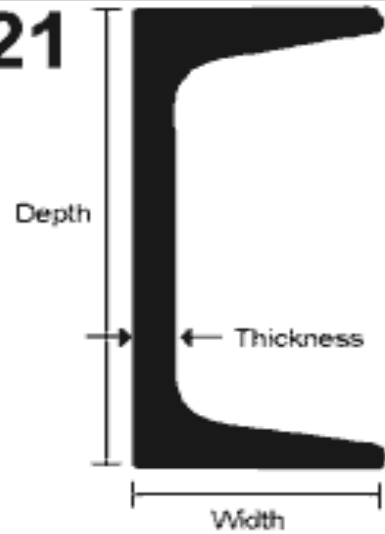


RHS D X B mm	Thickness mm	Sec Area A cm ²	Unit W kg/m	Moment of Inertia		Radius of Gyration		Elastic Modulus		Torsional Constants		Outer Surface
				I _{xx} cm ⁴	I _{yy} cm ⁴	r _{xx} cm	r _{yy} cm	Z _{xx} cm ³	Z _{yy} cm ³	J cm ⁴	B cm ³	Area per m m ²
50 x 25	2.00	2.74	2.15	8.38	2.81	1.75	1.01	3.35	2.25	6.79	3.79	0.142
	2.60	3.46	2.71	10.16	3.36	1.71	0.99	4.06	2.69	8.27	4.53	0.137
	3.20	4.13	3.24	11.63	3.80	1.68	0.96	4.65	3.04	9.52	5.12	0.134
	4.00	4.95	3.88	13.13	4.23	1.63	0.92	5.25	3.38	10.86	5.69	0.129
60 x 40	2.60	4.76	3.73	22.76	12.09	2.19	1.59	7.59	6.05	25.59	9.83	0.187
	2.90	5.25	4.12	24.74	13.11	2.17	1.58	8.25	6.56	28.02	10.66	0.185
	3.60	6.35	4.98	28.90	15.23	2.13	1.55	9.63	7.62	33.30	12.41	0.181
	4.50	7.67	6.02	33.31	17.44	2.08	1.51	11.10	8.72	39.34	14.29	0.177
66 x 33	2.60	4.70	3.69	25.15	8.43	2.31	1.34	7.62	5.11	20.75	8.71	0.185
	2.90	5.19	4.07	27.33	9.12	2.29	1.33	8.28	5.53	22.65	9.43	0.183
	3.60	6.28	4.93	31.87	10.52	2.25	1.29	9.66	6.37	26.71	10.90	0.179
	4.50	7.58	5.95	36.64	11.93	2.20	1.25	11.10	7.23	31.21	12.43	0.175
80 x 40	2.60	5.80	4.55	46.58	15.74	2.84	1.65	11.65	7.87	38.50	13.46	0.227
	3.20	7.01	5.50	54.94	18.41	2.80	1.62	13.74	9.21	45.83	15.78	0.224
	4.00	8.55	6.71	64.79	21.49	2.75	1.59	16.20	10.74	54.77	18.49	0.219
	4.80	10.01	7.85	73.22	24.03	2.71	1.55	18.30	12.02	62.81	20.79	0.215
96 x 48	3.20	8.54	6.71	98.61	33.28	3.40	1.97	20.54	13.87	82.13	23.82	0.272
	4.00	10.47	8.22	117.54	39.32	3.35	1.94	24.49	16.38	99.11	28.24	0.267
	4.80	12.31	9.66	134.35	44.55	3.30	1.90	27.99	18.56	114.80	32.14	0.263
122 x 61	3.60	12.32	9.67	232.61	78.83	4.34	2.53	38.13	25.84	193.91	44.50	0.347
	4.50	15.14	11.88	278.94	93.78	4.29	2.49	45.73	30.75	235.39	53.13	0.343
	5.40	17.85	14.01	320.83	107.03	4.24	2.45	52.60	35.09	274.29	60.89	0.338
145 x 82	4.80	20.28	15.92	555.16	228.50	5.23	3.36	76.57	55.73	534.27	94.45	0.429
	5.40	22.60	17.74	610.85	250.59	5.20	3.33	84.26	61.12	592.70	103.81	0.426
172 x 92	4.80	23.83	18.71	917.13	346.91	6.20	3.82	106.64	75.41	826.04	128.85	0.503
	5.40	26.59	20.88	1012.47	381.74	6.17	3.79	117.73	82.99	918.10	142.04	0.500
200 x 100	4.00	22.95	18.01	1199.71	410.78	7.23	4.23	119.97	82.16	991.47	141.46	0.579
	5.00	28.36	22.26	1459.25	496.94	7.17	4.19	145.93	99.39	1216.96	171.53	0.574
	6.00	33.63	26.40	1703.31	576.91	7.12	4.14	170.33	115.38	1434.03	199.68	0.569
	8.00	43.79	34.38	2146.21	719.19	7.00	4.05	214.62	143.84	1843.86	250.68	0.559
220 x 140	4.00	27.75	21.78	1892.62	947.66	8.26	5.84	172.06	135.38	2004.80	223.74	0.699
	5.00	34.36	26.97	2313.45	1155.23	8.21	5.80	210.31	165.04	2468.51	272.71	0.694
	6.00	40.83	32.05	2714.10	1351.70	8.15	5.75	246.74	193.10	2914.71	318.93	0.689
	8.00	53.39	41.91	3456.31	1712.25	8.05	5.66	314.21	244.61	3270.10	378.40	0.679
240 x 120	4.00	27.75	21.78	2110.72	725.35	8.72	5.11	175.89	120.89	1736.39	208.03	0.699
	5.00	34.36	26.97	2579.67	882.47	8.67	5.07	214.97	147.08	2138.48	253.55	0.694
	6.00	40.83	32.05	3025.91	1030.45	8.61	5.02	252.16	171.74	2528.39	296.7	0.689
	8.00	53.39	41.91	3851.84	1299.95	8.49	4.93	320.99	216.66	3272.9	376.29	0.679
260x 180	6.00	50.43	39.59	4855.87	2763.43	9.81	7.40	373.53	307.05	5619.50	501.06	0.849
	8.00	66.19	51.96	6238.69	3538.10	9.71	7.31	479.90	393.12	6821.23	620.13	0.839
	10.00	81.43	63.92	7509.51	4244.26	9.60	7.22	577.65	471.58	8972.14	760.42	0.834
	12.00	96.14	75.47	8672.42	4894.94	9.50	7.13	667.11	542.77	10150.39	875.12	0.829
300x 150	6.00	51.63	40.53	6073.51	2079.57	10.85	6.35	404.90	277.28	5034.64	478.20	0.869
	8.00	67.79	53.22	7808.95	2654.12	10.73	6.26	520.53	353.88	6559.05	612.64	0.859
	10.00	83.43	65.49	9403.90	3173.71	10.62	6.17	626.93	423.16	8011.67	736.01	0.848
	12.00	98.54	77.35	10866.10	3641.00	10.50	6.08	724.41	485.48	9110.72	829.98	0.838
300x 200	6.00	57.65	45.24	7370.23	3962.19	11.31	8.29	491.34	396.22	8186.02	650.85	0.969
	8.00	75.79	59.50	9513.66	5097.04	11.20	8.20	634.24	509.70	10722.83	839.54	0.959
	10.00	93.43	73.34	11507.24	6144.30	11.10	8.11	767.15	614.43	13169.70	1015.43	0.948
	12.00	110.54	86.77	13355.84	7107.43	10.99	8.02	890.39	710.43	15215.03	1160.24	0.938



STEEL SPECIFICATION HR CHANNEL

21



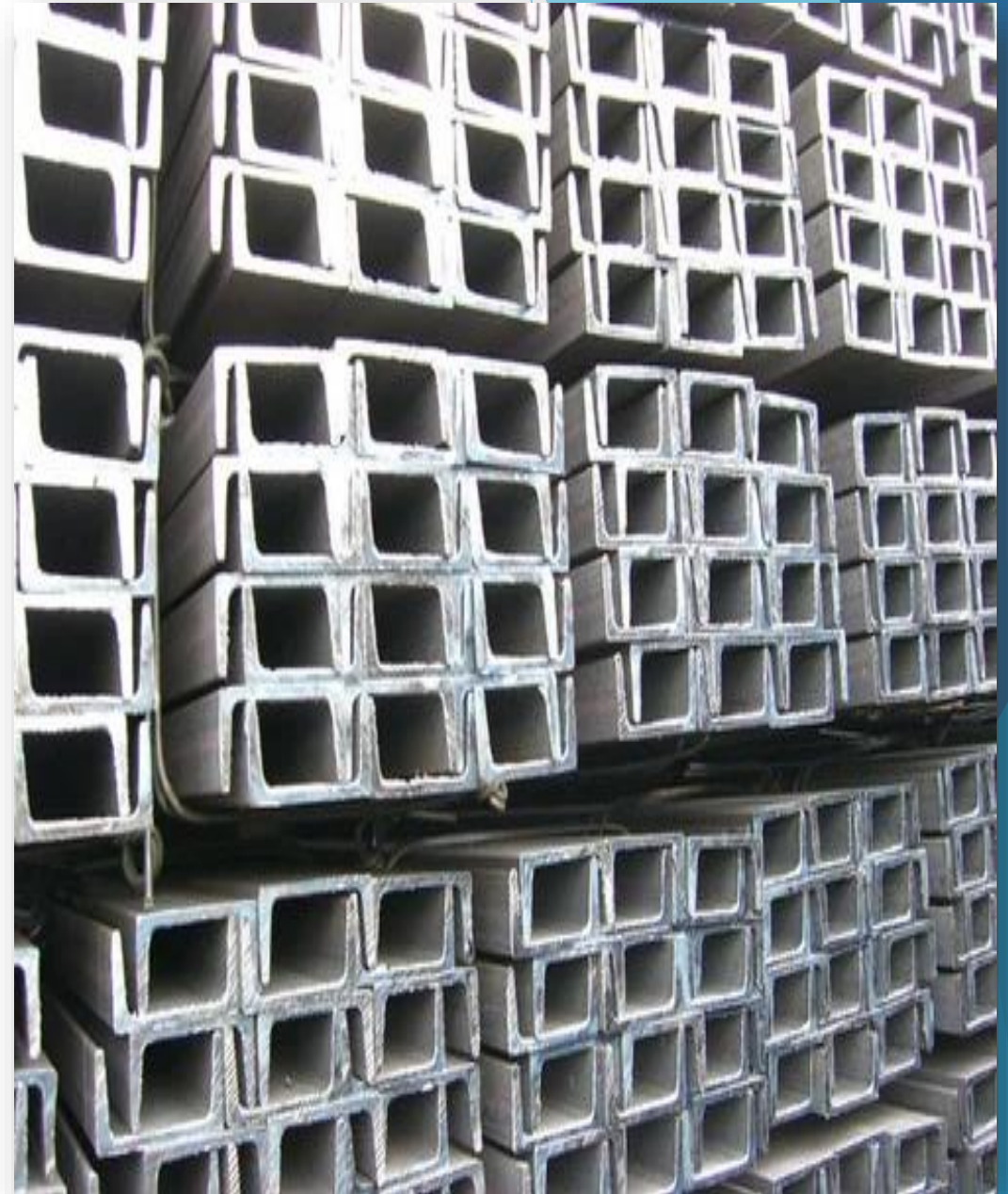
20 and 40 Ft
Lengths

Hot Rolled Channel, "C" Shapes

Readily available incremental sizes
for this Hot Rolled Steel product

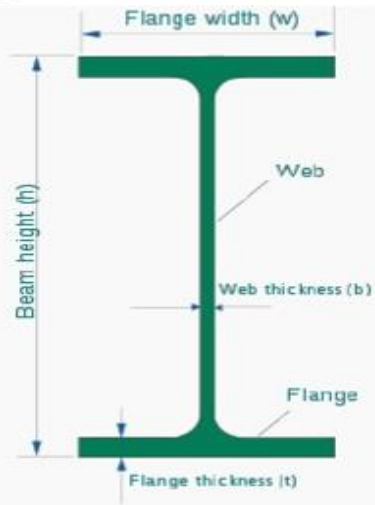
Section Number		Pounds per Foot	Depth in inches	Width in inches	Thickness in inches
C3	x	4.1	3	1.410	.170
		5	3	1.498	.258
		6	3	1.596	.356
C4	x	5.4	4	1.584	.184
		7.25	4	1.721	.321
C5	x	6.7	5	1.750	.190
		9	5	1.885	.325
C6	x	8.2	6	1.920	.200
		10.5	6	2.034	.314
C6	x	13	6	2.157	.437
C7	x	9.8	7	2.090	.210
		12.25	7	2.194	.314
		14.75	7	2.299	.419
C8	x	11.5	8	2.260	.220
		13.75	8	2.343	.303
C8	x	18.75	8	2.527	.487
C9	x	13.4	9	2.433	.233
		15	9	2.485	.285
C10	x	15.3	10	2.600	.240
		20	10	2.739	.379
C10	x	25	10	2.886	.526
C10	x	30	10	3.033	.673
C12	x	20.7	12	2.942	.282
		25	12	3.047	.387
		30	12	3.170	.510
C15	x	33.9	15	3.400	.400
		40	15	3.520	.520
		50	15	3.716	.716

Rust



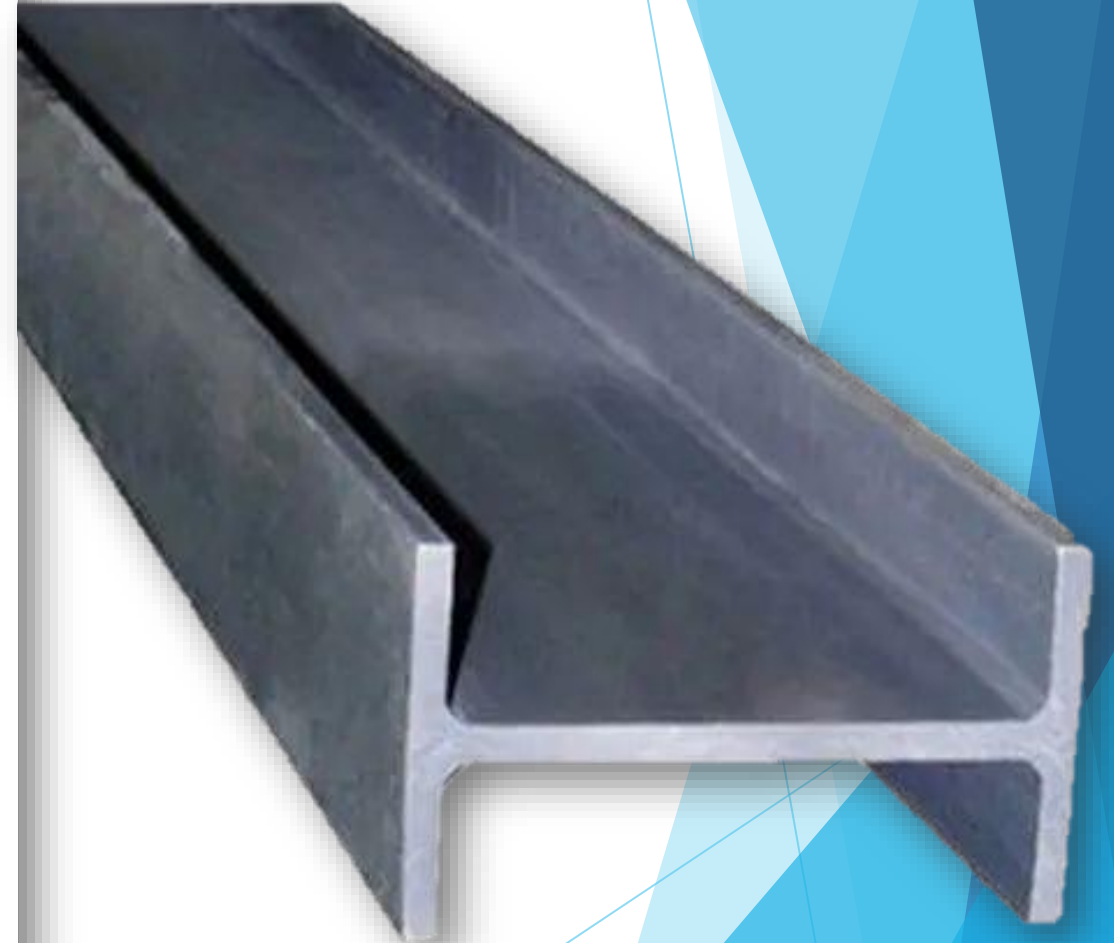
STEEL SPECIFICATIONS ISMB

Indian standard beams ISMB



Wide-flange I-beam.

Type	Beam height (mm)	Flange width (mm)	Web thickness (mm)	Flange thickness (mm)	Weight (kg/m)	Cross-section area (cm ²)	Moment of inertia in torsion (J) (cm ⁴)
ISMB 80	80	46	3.8	5.2	6.0	7.64	0.70
ISMB 100	100	55	4.1	5.7	8.1	10.3	1.10
ISMB 120	120	70	4.4	6.3	10.4	13.2	1.71
ISMB 140	140	73	4.7	6.9	12.9	16.4	2.54
ISMB 750 x 137	753	263	11.5	17	137	175	137.1



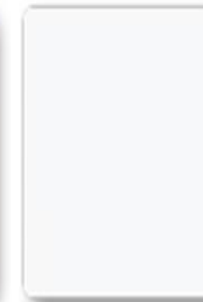
WOOD SPECIFICATIONS

PHYSICAL PROPERTIES

		Spruce	Pine	Fir
STIFFNESS / MOE (MPa)	Air Dry	10000	10900	10200
STRENGTH / MOR (MPa)	Air Dry	63	76	56
DENSITY (kg/m ³)	Air Dry	380	430	351
COMPRESSION PARALLEL (Mpa)	Air Dry	36.9	43.2	35.4
SHEAR (Mpa)	Air Dry	6.79	8.54	6.74
SHRINKAGE (air dried - 12%)	Tangential / Radial ratio	2.2	1.4	2.8



Normal
No finish



White paint finish
Dead matte



Natural PU
Gloss



Natural PU
Gloss

WOOD TOP COAT GLOSS

TECHNICAL DATA

TEST METHOD

Type:	One component Oil Modified Urethane (OMU)	
Description & Color	Dark blue/purple liquid (dries clear, slightly amber)	
Solids Content:	Approximately 53 %	ASTM D1644 method A
Density:	7.8 lbs/gallon	ASTM D1475
Viscosity:	Approximately 42 seconds for Gloss, 50 for Semi-gloss, 55 for Satin and 60 for Matte @ 23° C	ASTM D4212-99 (Zahn Cup #4)
Flash Point:	107-110° F (42-43° C)	ASTM D3278-96
Coverage:	500 to 600 sq.ft/gallon (depending on the application method and porosity of the wood)	
VOC:	Does not exceed 350 grams/ltr	ASTM D3269-96
Dry Time:	12-16 for recoat (under favorable drying conditions)	
Gloss Levels:	Gloss 90, Semi gloss 50, Satin 35 and Matte 20	
Abrasion Resistance:	Excellent	ASTM D4060-95
Resistance to Chemicals:	Very good resistance to water & common household chemicals/cleaners	
Storage Life:	24 months in original package stored away from excessive heat/sunlight	
Clean-Up	Mineral Spirits	

WOOD TERMITE COAT

TECHNICAL DATA

Coverage	15 - 20 sqm/L/Coat*
Drying Time	1-2 hours
Sheen level	NA
Flash point	NA
Stability of thinned paint	NA
Appearance	Clear
Solids	NA
Specific gravity	0.79
Recommended DFT	NA
Viscosity @25°C by Stormer Viscometer	NA
Pot life	NA
Shelf life	36 months
Contrast ratio	NA

WOOD FIRE RETARDANT COAT

Physical Data:

RTS Regulatory Data	3:1:1		3:1:1	
	(Reducer Line)		(Exempt Reducer Line)	
	LBS/GAL	g/L	LBS/GAL	g/L
Actual VOC	3.8 Max	470 Max	2.8 Max	340 Max
Regulatory VOC (less water and exempt solvents)	5.0 Max	600 Max	3.5 Max	420 Max
Density	8.0 - 8.5	960 - 1022	8.5 - 9.5	1020 - 1150
	WT. %	VOL. %	WT. %	VOL. %
Total Volatile Content	45 - 55	50 - 60	45 - 60	50 - 65
Water Content	0	0	0	0
Exempt Compound Content	1 - 5	1 - 5	20 - 30	15 - 25
Physical properties				
Chemical base	Polyurethane	Coverage (sq ft - DFT)	Approx 820 sq ft / 1.0mil	
Density lbs/gal (kg/l)	8.32 lbs/gal (0.997 kg/L)	Gloss	High gloss >90GU/60° +/- 10 GU	
Volume solids (%)	51%	Color	Clear	
Weight solids (%)	59%	Temperature Stability	Dry Heat up to 284°F/140°C	
Flash point	45°F (7°C)	Processing temperature	50 - 104°F (+10°C-40°C)	
Pot life / 77°F (+25°C)	Approx. 1 hour	Humidity	Until 85% R.H.	
Shelf life	Min. 24 month under normal storage conditions and unopened tins			

AEROCONE PANEL SPECIFICATIONS

Fire Rating of in minutes

Thickness-50mm-60 min

Sound transmission Coefficient

Thickness-50mm-33 db

Fire Propagation Index(I) of wall panel

3.7 as per BS 476 Part 6-1981

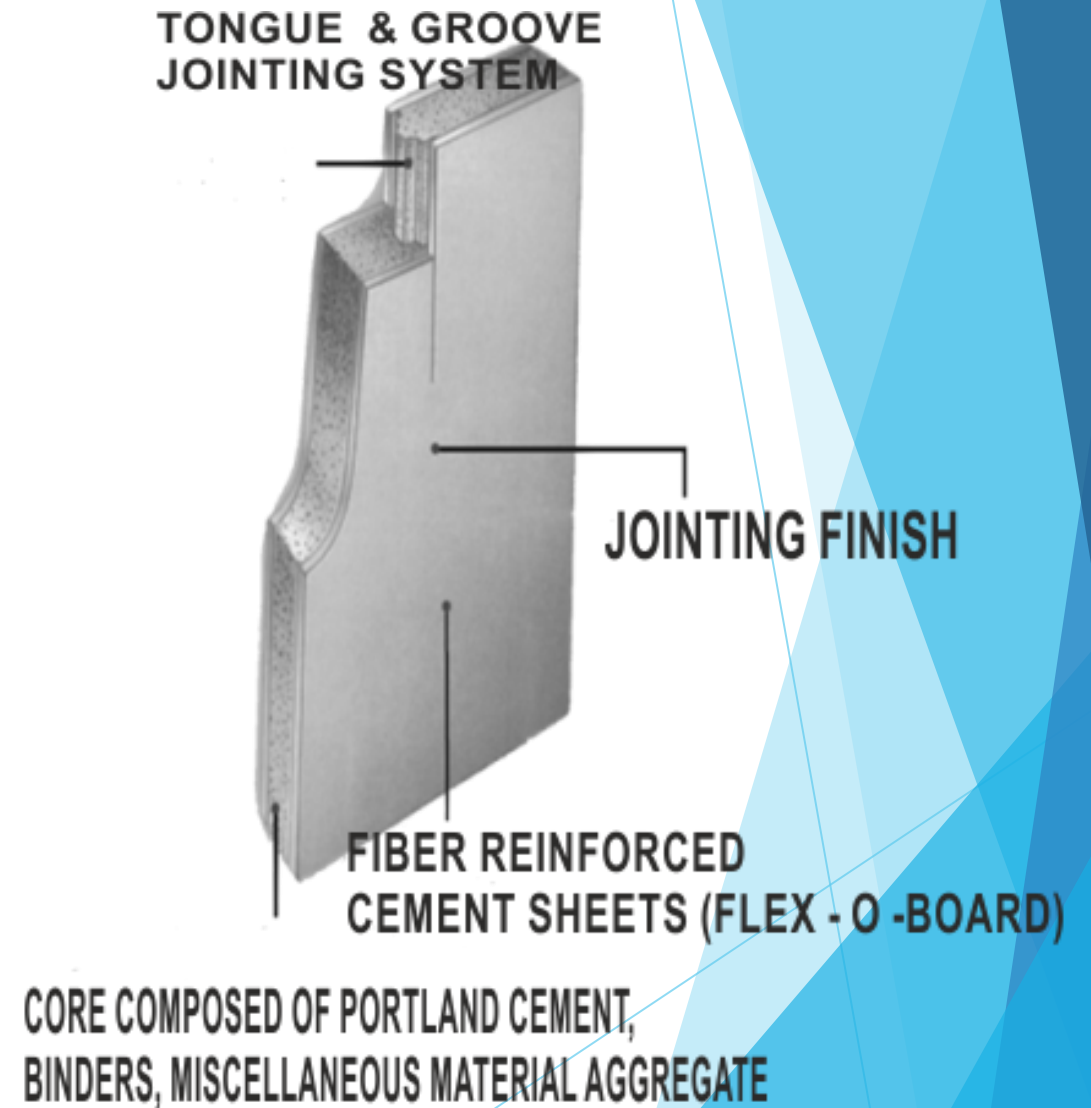
Wall Panel is categorized in non ignitable material.

Thermal Conductivity(w/m Deg.k) of wall panel

Thickness-50mm-0.22

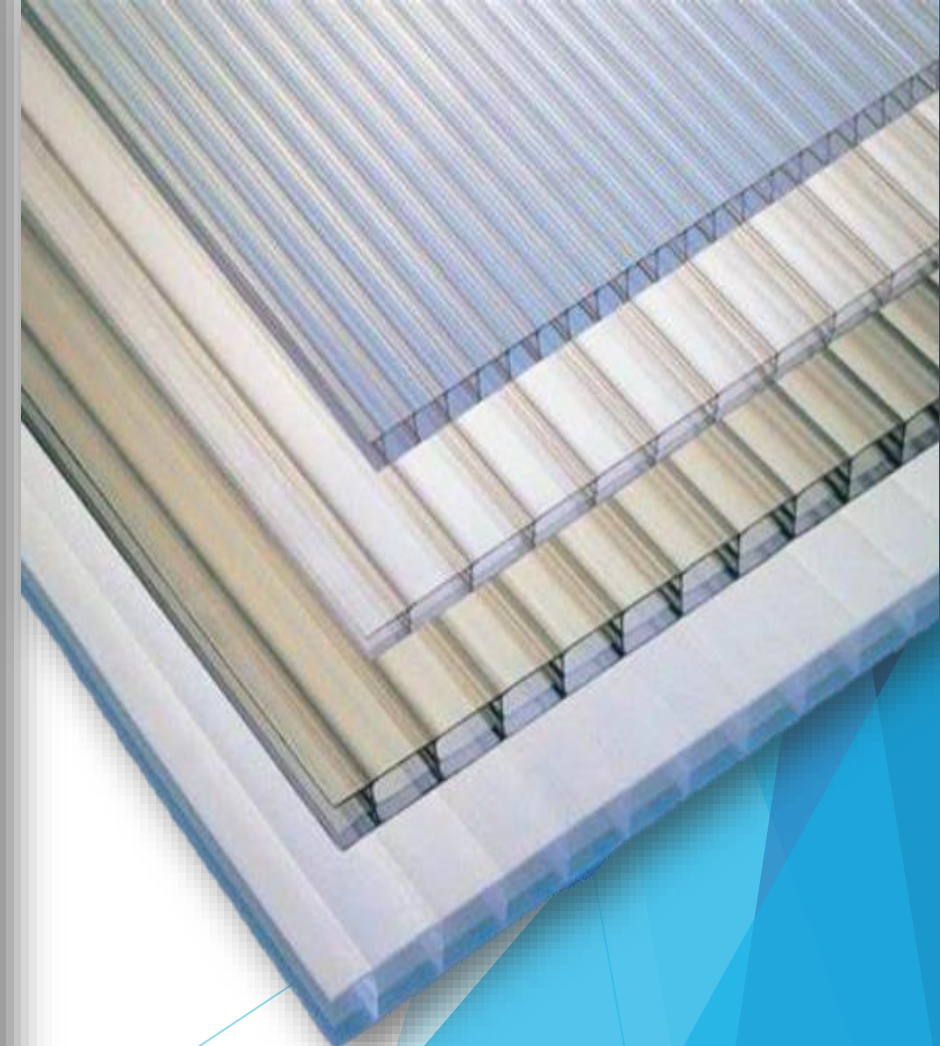
T Thickness-75mm-0.21

Wall panel are used as thermal insulated wall system.



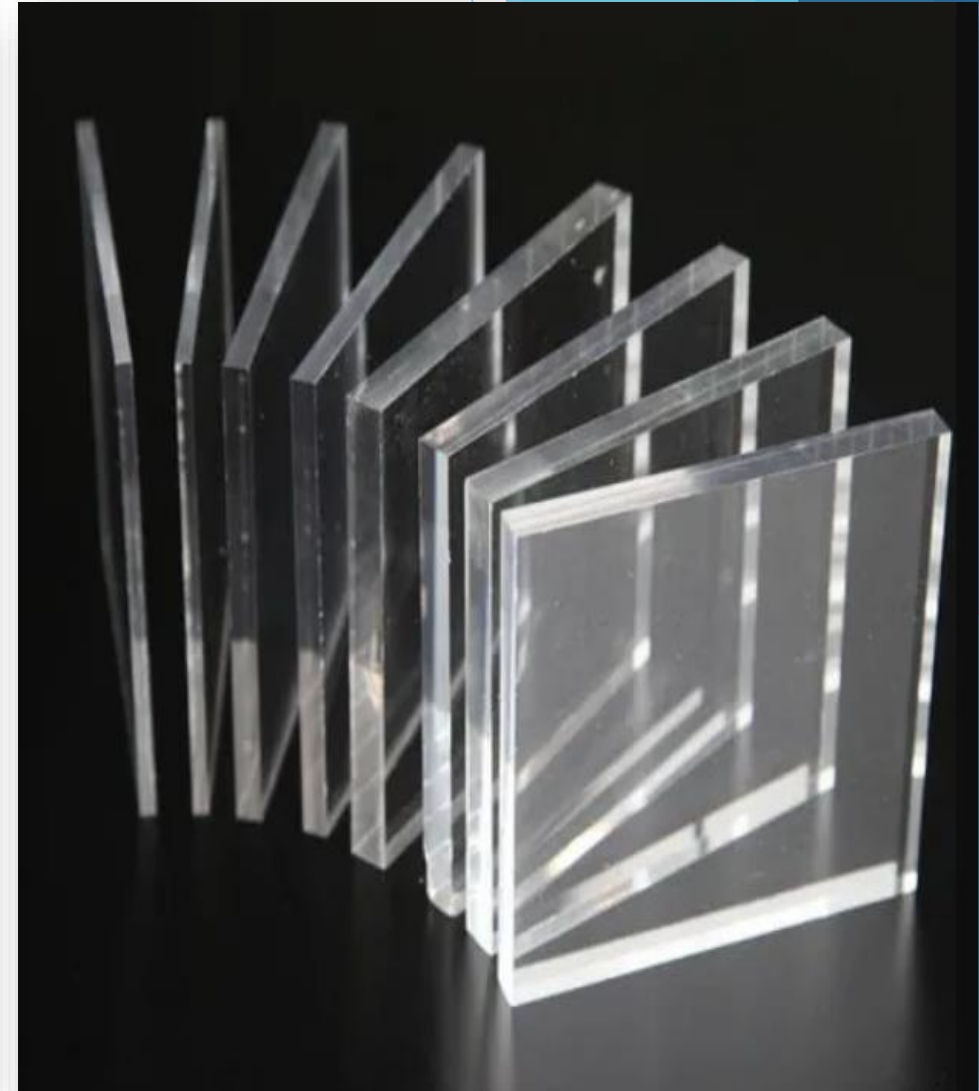
POLYCARBONATE SHEET SPECIFICATIONS

PROPERTIES	TEST METHOD	VALUE	UNIT
PHYSICAL			
Specific Gravity	ASTM D792	1.20	-
Sound Transmission STC Rating (36" x 84")	ASTM E9070		
@ 0.118"		25	
@ 0.177"		29	
@ 0.236"		31	
Light Transmission (Average)	ASTM D1003	88	%
Rockwell Hardness	ASTM D785	M70/ R118	-
Chemical Resistance	ANSI Z26.1	Passes	
MECHANICAL			
Tensile Strength @ Yield	ASTM D638	9,300	psi
Tensile Modulus	ASTM D638	345,000	psi
Flexural Strength	ASTM D790	14,000	psi
Flexural Modulus	ASTM D790	360,000	psi
Flexural Endurance @ 1,800 Cycles/Min, 73°F, 50% RH	ASTM D671	1,000	psi
Compression Strength @ yield	ASTM D695	10,400	psi
Elongation	ASTM D638	85	%
Izod Impact Strength, up to 125 mils, Notched Drop	ASTM D256A	12-18	ft-lbs-in
Dart Impact Strength, 1" dia. Dart @ 73°F	SABIC Method	>200	ft-lbs
@ 0°F		>200	
THERMAL			
Coefficient of Thermal Expansion	ASTM D696	3.75 x10-5	in/in/°F
Thermal Shrinkage	SABIC Test	1	%
Heat Deflection Temperature @ 264 psi	ASTM D648		°F
@ 66 psi		270	°F
Shading Coefficient	ASHRAE	280	-
Clear		1.02	-
Grey/ Bronze		.79	-



POLYPROPYLENE SHEET SPECIFICATIONS

Tensile strength	3.5 - 5.5 grams per denier
Melting point	165°C
Starts to soften	140°C
Specific gravity	0.91 grams per cc
Elongation@break	40 - 100 %
Abrasion resistance	Very good
Resistance to chemicals	Normally show very good resistance to chemicals
Effect of mildew	has very good resistance to mildew and bacteria



GLASS WOOL SPECIFICATIONS

Thermal Conductivity (K-values) & Thermal Resistance (R-values) of Twiga Insul

Thermal Conductivity in W/MK

Mean Temp.in DegC	Density in kg/m ³				
	12	16	24	32	48
10	0.038	0.035	0.031	0.030	0.027
25	0.041	0.039	0.033	0.032	0.030
50	0.048	0.043	0.039	0.035	0.033
100	0.065	0.057	0.047	0.043	0.040

Tolerance : +/-5%

Thermal Resistance in sq.m.K/W, Thickness 25 mm

Mean Temp.in DegC	Density in kg/m ³				
	12	16	24	32	48
10	0.66	0.71	0.81	0.83	0.93
25	0.61	0.64	0.76	0.78	0.83
50	0.52	0.58	0.64	0.71	0.76
100	0.38	0.44	0.53	0.58	0.63

Tolerance : +/-5%

Thermal Resistance in sq.m.K/W, Thickness 50 mm

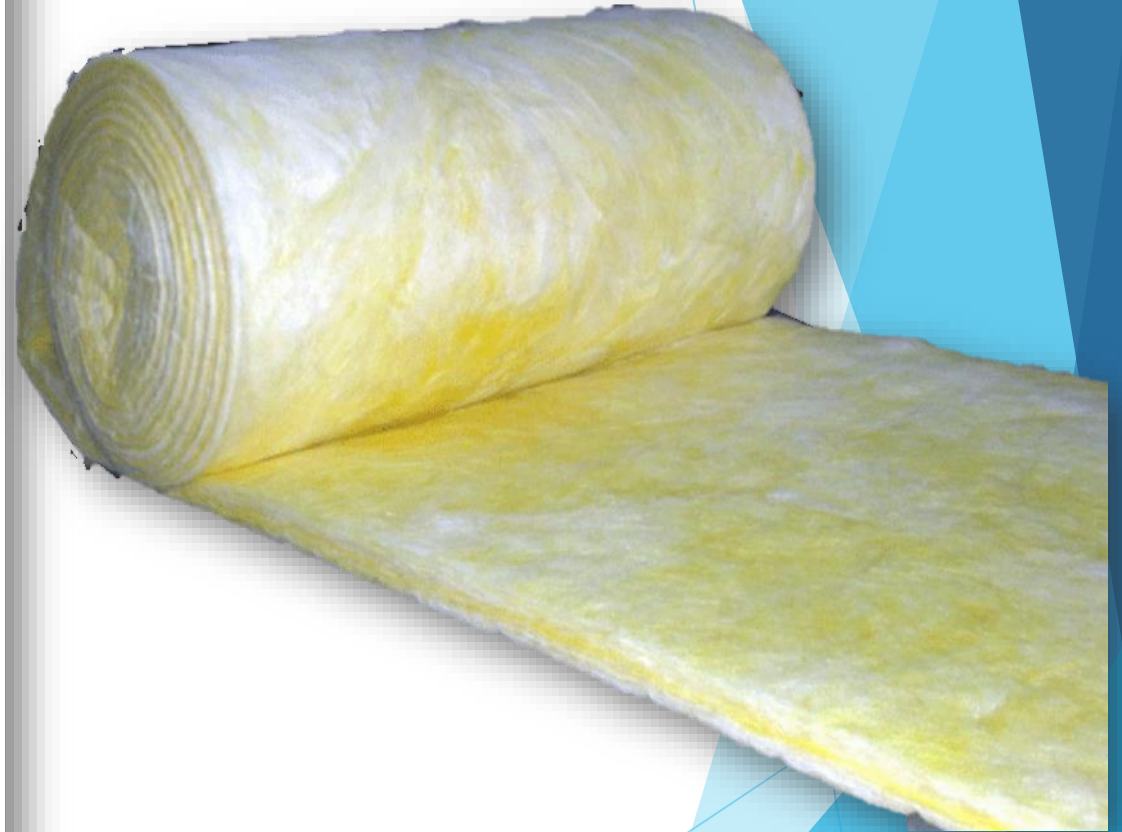
Mean Temp.in DegC	Density in kg/m ³				
	12	16	24	32	48
10	1.32	1.43	1.61	1.67	1.85
25	1.22	1.28	1.52	1.56	1.67
50	1.04	1.16	1.28	1.43	1.52
100	0.77	0.88	1.06	1.16	1.25

Tolerance : +/-5%

Acoustic Insulation Values

Specification Density x Thickness	Average NRC Frequency Range 100Hz-8000Hz
16 kg/m ³ x 50 mm	0.92
24 kg/m ³ x 50 mm	1.00
32 kg/m ³ x 50 mm	1.05
48 kg/m ³ x 50 mm	1.20

Tolerance : +/-5%



XPS SPECIFICATIONS

Typical Physical Properties¹

FOAMULAR® 150 Extruded Polystyrene Insulation

Property	Test Method ²	Value
Thermal Resistance³, R-Value (180 day) minimum, hr•ft ² •°F/Btu (RSI, °C•m ² /W)		
@ 75°F (24°C) mean temperature	ASTM C518	
1" Thickness		5.0 (0.88)
1½" Thickness		7.5 (1.32)
2" Thickness		10 (1.76)
2½" Thickness		12.5 (2.20)
3" Thickness		15 (2.64)
@ 40°F (4.4°C) mean temperature		
1" Thickness		5.4 (0.95)
1½" Thickness		8.1 (1.43)
2" Thickness		10.8 (1.90)
2½" Thickness		13.5 (2.38)
3" Thickness		16.2 (2.85)
Long Term Thermal Resistance, LTTR-Value³, minimum hr•ft ² •°F/Btu (RSI, °C•m ² /W)		
@ 75°F (24°C) mean temperature	CAN/ULC S770-03	
1" Thickness		5.0 (0.88)
1½" Thickness		7.8 (1.37)
2" Thickness		10.6 (1.87)
2½" Thickness		13.4 (2.36)
3" Thickness		16.2 (2.85)
Compressive Strength⁴, minimum psi (kPa)	ASTM D1621	15 (103)
Flexural Strength⁵, minimum psi (kPa)	ASTM C203	60 (414)
Water Absorption⁶, maximum % by volume	ASTM C272	0.10
Water Vapor Permeance⁷, maximum perm (ng/Pa•s•m²)	ASTM E96	1.5 (86)
Dimensional Stability, maximum % linear change	ASTM D2126	2.0
Flame Spread^{8,9}	ASTM E84	5
Smoke Developed^{8,9,10}	ASTM E84	45-175
Oxygen Index⁸, minimum % by volume	ASTM D2863	24
Service Temperature, maximum °F (°C)	—	165 (74)
Linear Coefficient of Thermal Expansion, in/in/°F (m/m/°C)	ASTM E228	3.5 × 10 ⁻⁵ (6.3 × 10 ⁻⁵)



MATERIAL SPECIFICATION DETAILS (ONDUVILLA)

Technical Characteristics

Length	1070 mm
Width	400 mm
Thickness	3 mm
Height of corrugation	38 mm
Gross Surface	0.428 m ²
Net surface	0.31 m ²
Weight per tile	1.27 kg
Weight per m ²	4 kg
Colours	7



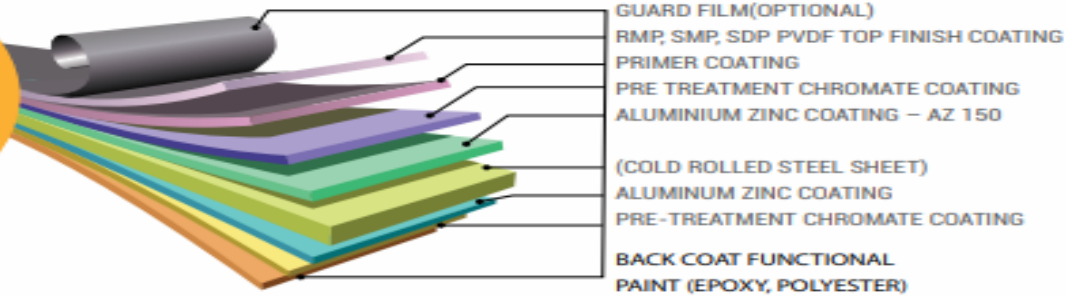
MATERIAL SPECIFICATION DETAILS (GALVANIZED SHEETS)



COLOUR COATED COILS & SHEETS

Technical Specifications

TECHNICAL SPECIFICATIONS



Thickness Range	0.20 mm – 0.90 mm
Width Range	900 mm to 1440 mm
Coating	AZ 150
Base Substrate	Alu Zinc Coated Steel
Primer	5 microns top , 5 microns back side
Top Coat	20 microns
Back Coat	5 microns
Colors	Top Coat – All colors as per customers requirement Back Coat – Jindal Grey (RAL 7035)
Paint System	RMP, SMP, SDP PVDF TOP FINISH COATING



MATERIAL SPECIFICATION DETAILS (SHERA BOARD)

Product Information



Blossom



Rocco



Cassia



Straight Grain



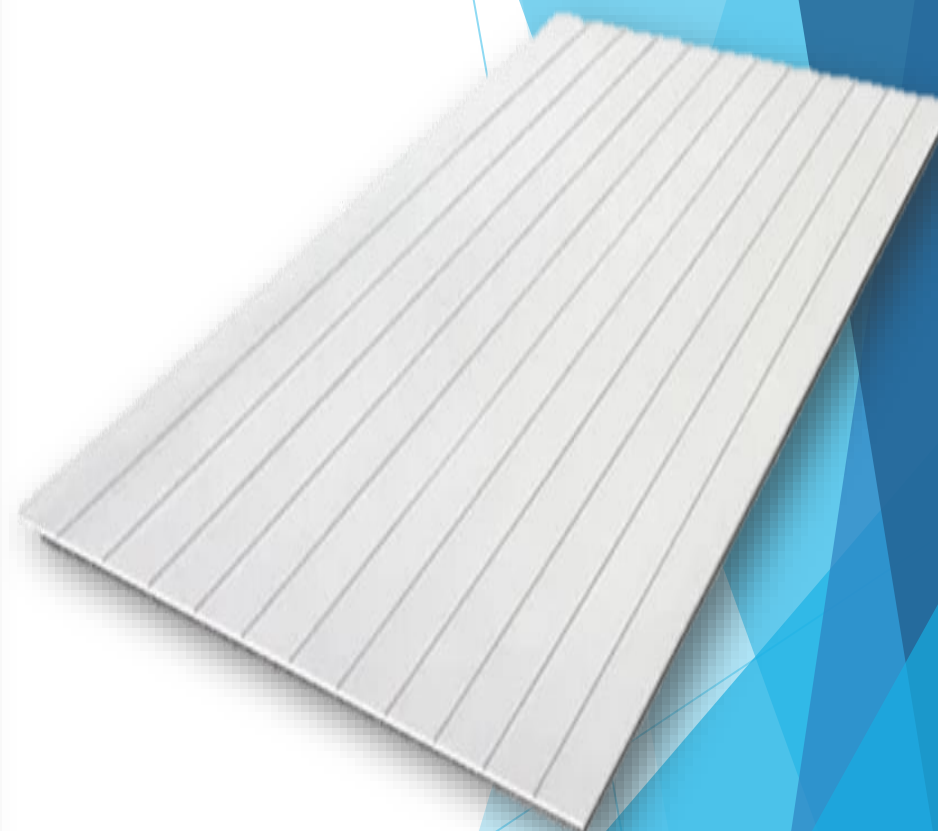
Cassiano

NEW



Brick

Texture	Size (cm.) (Thickness*Width*Length)	Weight (kg./pc.)	Quantity (pc./sq.m.)	Application area
Blossom/Rocco/Cassia	0.6 x 120 x 240	27.04	0.35	Decorative interior and exterior walls
	0.6 x 122 x 244	27.91	0.34	
Cassiano	0.6 x 120 x 240	27.04	0.35	
	0.6 x 122 x 244	27.91	0.34	
	0.8 x 120 x 240	36.05	0.35	
	0.8 x 122 x 244	37.26	0.34	
Straight Grain 3"	0.6 x 120 x 240	26.42	0.35	
	0.6 x 122 x 244	27.91	0.34	
Brick	0.6 x 120 x 240	27.04	0.35	
	0.6 x 122 x 244	27.91	0.34	
	0.8 x 120 x 240	37.05	0.35	



MATERIAL SPECIFICATION DETAILS (CERAMIC TILES)

Technical Specification Of Wall Tiles

Characteristics	As per IS 15622 : 2006 (Group B III) Table-9 E>10%	Our Values for Wall Tiles (Digital)
Dimension & Surface Quality		
i Length & Width	$\pm 0.20 \%$	$\pm 0.20 \%$
ii Thickness	$\pm 4.0 \%$	$\pm 4.0 \%$
iii Straightness	$\pm 0.15 \%$	$\pm 0.15 \%$
iv Rectangularity	$\pm 0.15 \%$	$\pm 0.15 \%$
v Surface Flatness	$\pm 0.15 \%$	$\pm 0.15 \%$
a. Centre Curvature (%) (max. Deviation)	$\pm 0.22 \%$	$\pm 0.22 \%$
b. Edge Curvature (%) (max. Deviation)	$\pm 0.22 \%$	$\pm 0.22 \%$
c. Corner Warpage (%) (max. Deviation)	$\pm 0.22 \%$	$\pm 0.22 \%$
vi Surface Quality	Min. 95% of the surface shall be free from visible defects	Min. 97% of the surface shall be free from visible defects
Physical Properties		
i Water Absorption	E>10 %	15 \pm 3%
ii Modulus of Rupture [N/mm ²]	Average Min. 15	min. 18
iii Bending Strength in (kg/cm)	>150kg/cm	>200-250 kg/cm
iv Moisture Expansions (mm/m)	0.04	0.02
v Scratch Hardness of surface (moh's Scale)	min. 3	min. 3
vi Coefficient of linear thermal expansion from ambient temperature to 100°C	$9 \times 10^{-6} \text{ K}^{-1}$ max.	$8 \times 10^{-6} \text{ K}^{-1}$ max.
vii Thermal Shock Resistance	10 cycle min.	Passed 10 Cycle
viii Crazeing Resistance	4 cycle @ 7.5 bar min.	Passed 2 Cycle
Chemical Properties		
i Stain Resistance	min. Class-1	min. Class-1
ii Resistance to house hold chemicals	min. Class AA	min. Class AA
iii Resistance to acids and alkalis (with exception of hydrofluoric acid and its compounds)	Required if agreed	min. Class AA

SENTHIL KUMAR.R

Managing Director



+91 9884788979
+91 44 48065340



senthilkmr213@gmail.com
www.sriramengineering.in



1, Nehru street, Kamaraj Nagar,
Chromepet, Chennai-600044.




SR COZY CHALET




PREETHI

MARKETING HEAD

 9629493979

 srcozychalet75@gmail.com

 www.sriramengineering.in

 1, Nehru Street, Kamaraj Nagar,
Chrompet, Chennai-600044



SR COZY CHALET

